

ADDENDUM #03

DATE:	November 1, 2022	PROJECT NO.:	Project # 20229080 CRSA Project # 21-031
TO:	Gramoll Construction 155 S. 750 W. North Salt Lake, UT 84054	PROJECT:	Rio Grande Depot Seismic 300 S. Rio Grande St. SLC, UT 84101

This Addendum forms a part of the Contract Documents and modifies the original Bid Documents dated October 3, 2022 as noted below. Acknowledge receipt of this Addendum in the space provided on the Bid Form. Failure to do so may subject the Bidder to disqualification.

This Addendum consists of (3) 8-1/2" x 11" Addendum pages, (0) 8-1/2" x 11" Specification pages and (14) 30" x 42" Addendum drawing pages.

- I. CHANGES TO PRIOR ADDENDA:**
 - I-1 None
 - I-2
- II. CHANGES TO BIDDING REQUIREMENTS:**
 - II-1 None
 - II-2
- III. CHANGES TO AGREEMENT & OTHER CONTRACT FORMS:**
 - III-1 None
 - III-2
- IV. CHANGES TO CONDITIONS OF THE CONTRACT:**
 - IV-1 None
 - IV-2
- V. CHANGES TO SPECIFICATIONS:**
 - V-1 None.
- VI. CHANGES TO DRAWINGS:**
 - VI-1 See addendum summary from Spectrum Engineers.
 - VI-2
- VII. ADDITIONAL INFORMATION:**
 - VII-1 None

END OF ADDENDUM



Mechanical Engineering
Electrical Engineering
Technology Engineering
Acoustical Engineering
Lighting Design
Theatre Design
Fire Protection Engineering
Building Commissioning

Salt Lake City | Phoenix | St. Louis | Baltimore
[p] 800-678-7077
www.spectrum-engineers.com

Electrical Addendum 03 BP-01

Date: November 1, 2022

To:

Company:

Job:

Rio Grande

Job No:

Cc:

From:

Michael Fackrell, PM

Email:

Michael.fackrell@speceng.com

Phone:

801-401-8447

Re:

This Addendum shall be considered part of the Contract Documents and Project Manual for the above mentioned project as though it had been issued at the same time and shall be incorporated integrally therewith. Where provisions of the following supplementary data differ from those of the original Contract Documents and Project Manual, the Addendum shall govern and take precedence.

Electrical Addendum

Drawings updated to show individual devices on exterior walls.

END OF ADDENDUM

Attachments: Rio Grande Depot - BP-01 - ADD 03 - 11-01-22

ARCHITECT CRSA 175 S MAIN ST., STE 300 SALT LAKE CITY, UT 84111	C/O ZACH HESLOP zheslop@crsa.com (801)746-6274
STRUCTURAL ENGINEER REAVLEY ENGINEERS + ASSOC. 767 EAST 500 SOUTH, SUITE 400 SALT LAKE CITY, UT 84102	C/O JERROD JOHNSON johnson@reavley.com (801) 468-3553
MECHANICAL ENGINEER COLVIN ENGINEERING ASSOC. 505 E. SOUTH TEMPLE SALT LAKE CITY, UT 84102	C/O ALLEN EVANS aeavans@colvin.com (801) 322-2400
ELECTRICAL ENGINEER SPECTRUM ENGINEERING 324 STATE ST., STE. 400 SALT LAKE CITY, UT 84102	C/O MICHAEL FACKRELL michael.fackrell@sepcorp.com (801) 328-5151
CIVIL SANDHILL CONSTRUCTION 155 S 750 W NORTH SALT LAKE, UT 84054	C/O JIM GRAMOLL jim.gramoll@gramoll.com (801) 295-2341

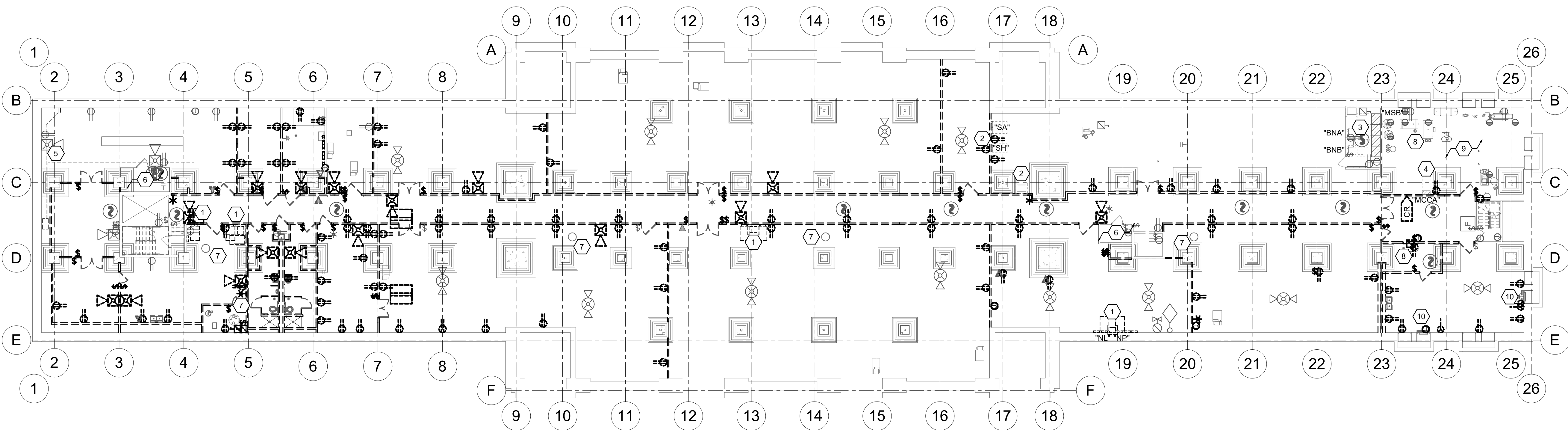
1. PRIOR TO SUBMITTING BID THE ELECTRICAL CONTRACTOR SHALL VISIT THE SITE AND FIELD VERIFY THE EXTENT OF ELECTRICAL DEMOLITION WORK TO MEET THE INTENT OF THE BID DOCUMENTS AND INCLUDE ALL COSTS IN BID.
2. COORDINATE ELECTRICAL DEMOLITION WORK WITH ALL OTHER TRADES. REFER TO ALL ELECTRICAL AND MECHANICAL SPECIFICATIONS FOR COMPLETE ELECTRICAL DEMOLITION SCOPE. REMOVE, RELOCATE OR MODIFY THE ELECTRICAL SYSTEMS AS REQUIRED TO ACCOMMODATE THE SCOPE OF THIS PROJECT.
3. REMOVE ALL DEVICES, RACEWAYS AND WIRING FROM WALLS TO BE REMOVED (INDICATED BY DASHED LINES). WHERE ACTE RACEWAYS OCCUR IN WALLS TO BE REMOVED, RE-ROUTE THE RACEWAY WITH ASSOCIATED WIRING TO KEEP THE CIRCUIT FUNCTIONAL. WHERE THE RACEWAY IS TO BE REMOVED FROM A CEILING OR RE-INSTALLED, THEN PROVIDE NEW ELECTRICAL DEVICES IN EQUIPMENT TO MATCH THE ORIGINAL.
4. PRIOR TO REMOVAL OF ANY ELECTRICAL EQUIPMENT OR WIRING, FIELD VERIFY THAT THE EQUIPMENT OR WIRING IS INACTIVE OR NO LONGER IN USE.
5. LOCATE, PROTECT AND MAINTAIN ALL OTHER ELECTRICAL EQUIPMENT, FITURES, DEVICES, CONDUIT AND WIRING IN FACT AND OPERATIONAL. IF REMOVED OR DAMAGED AS PART OF THE DEMOLITION WORK, REPLACE LIKE FOR LIKE AND MAKE OPERATIONAL.
6. REMOVE ALL FIRE ALARM DEVICES WHERE EXISTING WALLS AND CEILINGS ARE BEING DEMOLISHED. REMOVE EXISTING CONDUIT AND WIRING. EXISTING FIRE ALARM DEVICES AND SYSTEM NOT INDICATED FOR REMOVAL, SHALL REMAIN ACTIVE THROUGHOUT DEMOLITION AND CONSTRUCTION UNTIL THE NEW SYSTEM IS TESTED AND OPERATIONAL. MAINTAIN EXISTING FIRE ALARM INITIATING AND INDICATING LOOPS WHERE EXISTING DEVICES ARE REMOVED.
7. REMOVE ALL ABANDONED RACEWAY, CONDUIT, WIRING AND CABLEING WHETHER ABANDONED PREVIOUS TO THIS PROJECT OR AS A RESULT OF THIS PROJECT. NOT ALL ABANDONED ITEMS ARE SHOWN ON THESE PLANS AND FIELD VERIFICATION OF DEMOLITION SCOPE EXTENT IS REQUIRED.
8. CONTRACTOR TO TRACE AND LABEL ALL EXISTING LOADS TO REMAIN, THAT ARE CURRENTLY FED FROM PANELS THAT ARE BEING DEMOLISHED OR REMOVED IN THIS PROJECT. THE LOADS TO BE RE-FED FROM NEW OR RENSTALLED EXISTING PANELS IN FOLLOWING PHASE(S).
9. REFER TO MECHANICAL DRAWINGS FOR MECHANICAL EQUIPMENT DEMOLITION, DISCONNECT, REMOVE AND/OR RELOCATED ALL ELECTRICAL ASSOCIATED WITH MECHANICAL EQUIPMENT TO BE REMOVED OR RELOCATED.
10. CONTRACTOR TO COORDINATE WITH DTS FOR ALL TELECOMMUNICATIONS AND SECURITY/ACCESS CONTROL CABLEING IN WALLS TO BE DEMOLISHED.

- 1 DOCUMENT, DE-ENERGIZE, PRESERVE, DISCONNECT, REMOVE, AND STORE EXISTING ELECTRICAL GEAR. THE FOLLOWING SHALL BE DOCUMENTED ON THE AS BUILDS (RACEWAY SIZE(S), CONDUCTOR SIZE(S), BREAKER SIZE(S), LOCATION(S), AND PANE CIRCUITING). ELECTRICAL GEAR TO BE RE-INSTALLED TO ORIGINAL CONDITIONS PER FUTURE BP-03.
- 2 EXISTING ELECTRICAL EQUIPMENT TO REMAIN. PROTECT EXISTING ELECTRICAL EQUIPMENT AND FEEDERS IN CURRENT LOCATION.
- 3 THE ELECTRICAL EQUIPMENT INDICATED IS EXISTING TO REMAIN. CONTRACTOR TO PROTECT EQUIPMENT.
- 4 ALL ELECTRICAL CONNECTIONS TO ACTIVE MECHANICAL EQUIPMENT IN BASEMENT MECHANICAL ROOM SHALL REMAIN ACTIVE TO MAINTAIN BUILDING HEAT THROUGHOUT WINTER WHILE ABATEMENT IS UNDERWAY.
- 5 EXISTING TELECOM BACKBONE. CONTRACTOR TO COORDINATE WITH DTS AND/OR PROVIDER TO PRESERVE, DISCONNECT, REMOVE, AND REINSTALL TO EXISTING CONDITIONS.
- 6 EXISTING ELEVATOR EQUIPMENT IN THE ELEVATOR EQUIPMENT ROOM IS TO REMAIN. PROTECT EXISTING ELECTRICAL EQUIPMENT AND FEEDERS IN CURRENT LOCATION.
- 7 EXISTING SUMP PUMP IN AREA TO REMAIN DURING PHASE 01 DEMOLITION. ELECTRICAL CONTRACTOR TO PROVIDE TEMPORARY POWER CONNECTION TO PUMP AS NEEDED DURING PHASE 01 DEMOLITION.
- 8 EXISTING SUMP PUMP IS TO REMAIN. PROTECT EXISTING SUMP PUMP ELECTRICAL EQUIPMENT AND FEEDERS IN CURRENT LOCATION.
- 9 EXISTING MECHANICAL ROOM. REFER TO MECHANICAL SHEET 1.MD401.
- 10 EXISTING MECHANICAL EQUIPMENT. REFER TO MECHANICAL SHEET 1.MD100 SHEETS FOR MORE DETAILS.

```

graph LR
    A[A: 1] --> B[B: 2]
    B --> C[C: 1]
  
```

1.ED100



1 BASEMENT OVERALL ELECTRICAL DEMOLITION PLAN

ARCHITECT CRSA 5 S. MAIN ST., STE. 300 SALT LAKE CITY, UT 84111	C/O ZACH HESLOP zheslop@crsa-us.com (801)746-8874
STRUCTURAL ENGINEER REAVELEY ENGINEERS + ASSOC. 675 EAST 5000 SUITE 400 SALT LAKE CITY, UT 84142	C/O JEROD JOHNSON johnson@reaveley.com (801)448-3883
MECHANICAL ENGINEER COLVIN ENGINEERING ASSOC. 505 E. SOUTH TEMPLE SALT LAKE CITY, UT 84102	C/O ALLEN EVANS aevans@ce-ut.com (801) 322-2400
ELECTRICAL ENGINEER SPECTRUM ENGINEERING 324 STATE ST. STE. 400 SALT LAKE CITY, UT 84102	C/O MICHAEL FACKRELL michael.fackrell@spectrum.com (801) 328-5151
CM/IG GRANOLL CONSTRUCTION 155 S 750 W NORTH SALT LAKE, UT 84054	C/O JIM GRANOLL jim.granoll@granoll.com (801) 295-2341

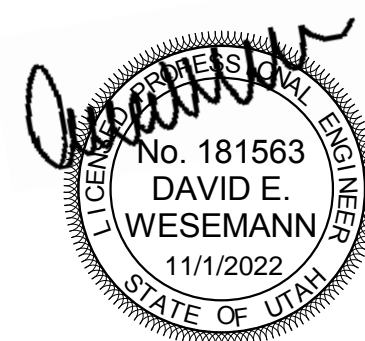
1. PRIOR TO SUBMITTING BID, THE ELECTRICAL CONTRACTOR SHALL VISIT THE SITE AND FIELD VERIFY THE EXTENT OF ELECTRICAL DEMOLITION WORK TO MEET THE INTENT OF THE BID DOCUMENTS AND INCLUDE ALL COSTS IN BID.
2. COORDINATE ELECTRICAL DEMOLITION WORK WITH ALL OTHER TRADES. REFER TO ARCHITECTURAL AND ALL OTHER SHEETS AND SPECIFICATIONS FOR COMPLETE DEMOLITION REQUIREMENTS. REMOVE, RELOCATE OR MODIFY THE ELECTRICAL SYSTEM AS REQUIRED TO ACCOMMODATE THE SCOPE OF THIS PROJECT.
3. REMOVE ALL DEVICES, RACEWAYS AND WIRING FROM WALLS TO BE REMOVED (INDICATED BY DASHED LINES), WHERE ACTIVE RACEWAYS OCCUR IN WALLS TO BE REMOVED, RE-ROUTE THE RACEWAY WITH ASSOCIATED WIRING TO KEEP THE CIRCUIT FUNCTIONAL WHERE POSSIBLE. REMOVE, RELOCATE OR MODIFY THE ELECTRICAL SYSTEM, THEN PROVIDE NEW ELECTRICAL DEVICES IN EQUIPMENT TO MATCH THE ORIGINAL.
4. PRIOR TO REMOVAL OF ANY ELECTRICAL EQUIPMENT OR WIRING, FIELD VERIFY THAT THE EQUIPMENT OR WIRING IS INACTIVE OR NO LONGER IN USE.
5. LOCATE, PROTECT AND MAINTAIN ALL OTHER ELECTRICAL EQUIPMENT, FIXTURES, AND/OR CONDUIT AND RACEWAYS TO REMAIN. REMOVE OR DAMAGE TO REMAIN AS PART OF THE DEMOLITION WORK, REPLACE LIKE FOR LIKE AND MAKE OPERATIONAL.
6. REMOVE ALL FIRE ALARM DEVICES WHERE EXISTING WALLS AND CEILINGS ARE BEING REMOVED. CONDUCT AND MAINTAIN ALL EXISTING FIRE ALARM DEVICES AND SYSTEM NOT INFLAMED FOR REMOVAL SHALL REMAIN ACTIVE THROUGHOUT DEMOLITION AND CONSTRUCTION UNTIL THE NEW SYSTEM IS TESTED AND OPERATIONAL. MAINTAIN THE EXISTING ALARM INITIATING AND OPERATING LOOPS WHERE EXISTING DEVICES ARE REMOVED.
7. REMOVE ALL ABANDONED RACEWAY, CONDUIT, WIRING AND CABLING WHETHER ABANDONED PREVIOUS TO THIS PROJECT OR AS A RESULT OF THIS PROJECT. NOT ALL ABANDONED ITEMS ARE SHOWN ON THESE PLANS AND FIELD VERIFICATION OF DEMOLITION SCOPE EXTENT IS REQUIRED.
8. CONTRACTOR TO TRACE AND LABEL ALL EXISTING LOADS TO REMAIN, THAT ARE CURRENTLY FED FROM PANELS THAT ARE BEING DEMOLISHED OR REMOVED IN THIS PROJECT. ALL PANELS MUST BE RE-FED FROM NEW OR RE-INSTALLED EXISTING PANELS IN FOLLOWING PAGE(S).
9. REFER TO MECHANICAL DRAWINGS FOR MECHANICAL EQUIPMENT DEMOLITION. DISCONNECT, REMOVE AND/OR RELOCATED ALL ELECTRICITY ASSOCIATED WITH MECHANICAL EQUIPMENT TO BE REMOVED OR RELOCATED.
10. CONTRACTOR TO COORDINATE WITH DTS FOR ALL TELECOMMUNICATIONS AND SECURITY/ACCESS CONTROL CABLING IN WALLS TO BE DEMOLISHED.

1. EXISTING ELECTRICAL EQUIPMENT TO REMAIN. PROTECT EXISTING ELECTRICAL EQUIPMENT AND FEEDERS IN CURRENT LOCATION.
2. EXISTING TELECOM BACKBONE. CONTRACTOR TO COORDINATE WITH DTS AND/OR PROVIDER TO PRESERVE, DISCONNECT, REMOVE, AND REINSTALL TO EXISTING CONDITIONS.
3. EXISTING TELECOM ROOM WITH BACKS, BACKBONE & CABLING. CONTRACTOR TO COORDINATE WITH DTS AND/OR PROVIDER TO DISCONNECT, PRESERVE, DISCONNECT & REMOVE ALL TELECOM AND SECURITY EQUIPMENT AND CABLING TO BE RE-INSTALLED TO EXISTING CONDITIONS POST SEISMIC UPGRADES.
4. DOCUMENT, DE-ENERGIZE, PRESERVE, DISCONNECT, REMOVE, AND STORE EXISTING ELECTRICAL GEAR. THE FOLLOWING SHALL BE DOCUMENTED ON THE AS BUILDS (RACEWAY SIZES), CONDUCTOR SIZES (LARGER SIZES), LOCATIONS, AND PANEL IDENTIFICATION. DISCONNECT TO BE RE-INSTALLED TO ORIGINAL CONDITIONS PER FUTURE BP-03.
5. EXISTING STEAM BOILER ELECTRICAL CONNECTION(S) SHALL REMAIN ACTIVE TO MAINTAIN BUILDING HEAT THROUGHOUT WINTER WHILE ABATEMENT IS UNDERWAY.

300 SOUTH RIO GRANDE STREET
SALT LAKE CITY, UT 84101

DFCM PROJECT #20229080

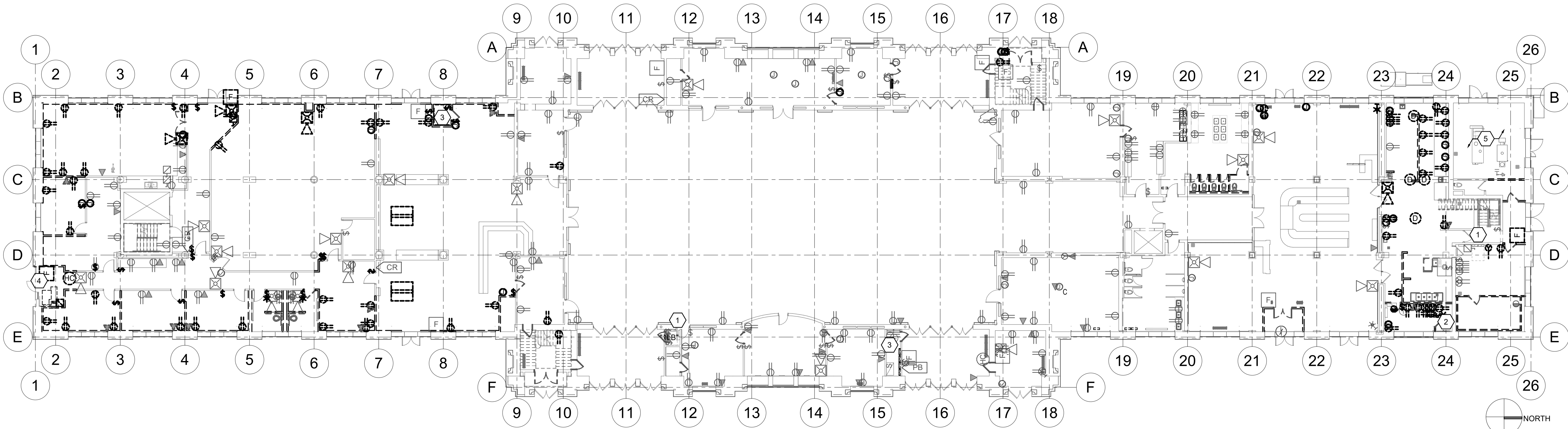
STAMI



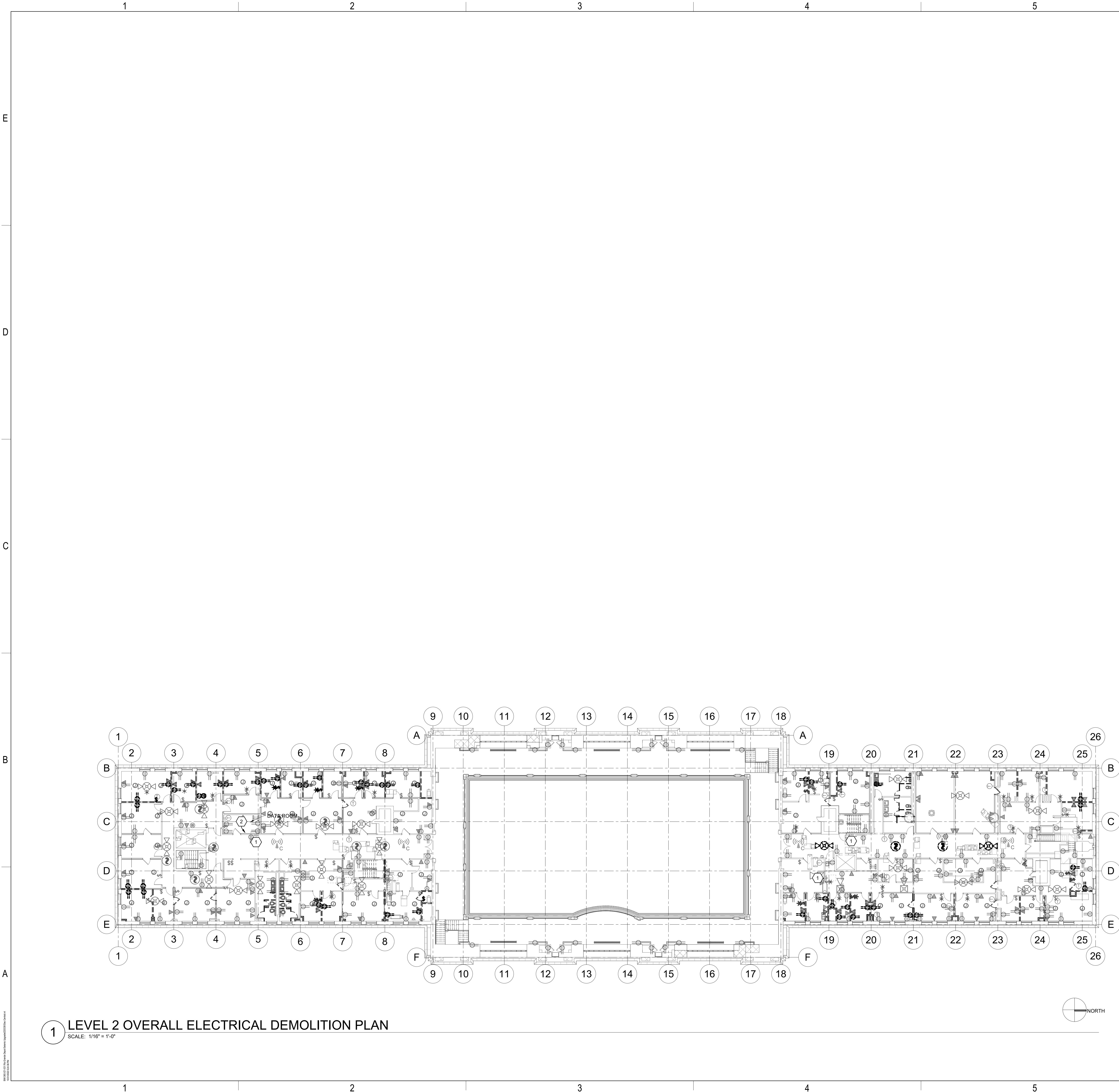
ISSUE TYPE:		DATE:	
BP-01 DD		October 17, 2022	
△			
1	ADD#01	10/19/22	
2	ADD#02	10/31/22	
3	ADD#03	11/01/22	
PROJECT NUMBER:		220338	
DRAWN BY:		JJN	
CHECKED BY:		MCF	

PHASE 1 LEVEL 1 OVERALL ELECTRICAL DEMOLITION PLAN

1.ED101



1 LEVEL 1 OVERALL ELECTRICAL DEMOLITION PLAN
SCALE: 1/16" = 1'-0"



1 LEVEL 2 OVERALL ELECTRICAL DEMOLITION PLAN
SCALE: 1/16" = 1'-0"

GENERAL SHEET NOTES

- 1 PRIOR TO SUBMITTING BID, THE ELECTRICAL CONTRACTOR SHALL VISIT THE SITE AND FIELD VERIFY THE EXTENT OF ELECTRICAL DEMOLITION WORK TO MEET THE INTENT OF THE BID DOCUMENTS AND INCLUDE ALL COSTS IN BID.
- 2 COORDINATE ELECTRICAL DEMOLITION WORK WITH ALL OTHER TRADES. REFER TO ARCHITECTURAL AND ALL OTHER SHEETS AND SPECIFICATIONS FOR COMPLETE DEMOLITION SCOPE. REMOVE, RELOCATE OR MODIFY THE ELECTRICAL SYSTEM AS REQUIRED TO ACCOMMODATE THE SCOPE OF THIS PROJECT.
- 3 REMOVE ALL DEVICES, RACEWAYS AND WIRING FROM WALLS TO BE REMOVED (INDICATED BY DASHED LINES). WHERE ACTIVE RACEWAYS OCCUR IN WALLS TO BE REMOVED, RE-ROUTE THE RACEWAY WITH ASSOCIATED WIRING TO KEEP THE CIRCUIT OPERATIONAL WHERE WALLS ARE BEING REPLACED, RELOCATED OR RE-INSTALLED, THEN PROVIDE NEW ELECTRICAL DEVICES IN EQUIPMENT TO MATCH THE ORIGINAL.
- 4 PRIOR TO REMOVAL OF ANY ELECTRICAL EQUIPMENT OR WIRING, FIELD VERIFY THAT THE EQUIPMENT OR WIRING IS INACTIVE OR NO LONGER IN USE.
- 5 LOCATE, PROTECT AND MAINTAIN ALL OTHER ELECTRICAL EQUIPMENT, FIXTURES, DEVICES, CONDUIT AND WIRING IN TACT AND OPERATIONAL. IF REMOVED OR DAMAGED AS PART OF THE DEMOLITION WORK, REPLACE LIKE FOR LIKE AND MAKE OPERATIONAL.
- 6 REMOVE ALL FIRE ALARM DEVICES WHERE EXISTING WALLS AND CEILINGS ARE BEING REMOVED, WITH ASSOCIATED CONDUIT AND WIRING. EXISTING FIRE ALARM DEVICES AND SYSTEM NOT INDICATED FOR REMOVAL SHALL REMAIN ACTIVE THROUGHOUT DEMOLITION AND CONSTRUCTION UNTIL THE NEW SYSTEM IS TESTED AND OPERATIONAL. MAINTAIN ALL CLASS A FIRE ALARM INITIATING AND INDICATING LOOPS WHERE EXISTING DEVICES ARE REMOVED.
- 7 REMOVE ALL ABANDONED RACEWAY, CONDUIT, WIRING AND CABLING WHETHER ABANDONED PREVIOUS TO THIS PROJECT OR AS A RESULT OF THIS PROJECT. NOT ALL ABANDONED ITEMS ARE SHOWN ON THESE PLANS AND FIELD VERIFICATION OF DEMOLITION SCOPE EXTENT IS REQUIRED.
- 8 CONTRACTOR TO TRACE AND LABEL ALL EXISTING LOADS TO REMAIN, THAT ARE CURRENTLY FED FROM PANELS THAT ARE BEING DEMOLISHED OR REMOVED IN THIS PHASE. THESE LOADS TO BE RE-FED FROM NEW OR RE-INSTALLED EXISTING PANELS IN FOLLOWING PHASE(S).
- 9 REFER TO MECHANICAL DRAWINGS FOR MECHANICAL EQUIPMENT DEMOLITION, DISCONNECT, REMOVE AND/OR RELOCATED ALL ELECTRICAL ASSOCIATED WITH MECHANICAL EQUIPMENT TO BE REMOVED OR RELOCATED.
- 10 CONTRACTOR TO COORDINATE WITH DTS FOR ALL TELECOMMUNICATIONS AND SECURITY/ACCESS CONTROL CABLING IN WALLS TO BE DEMOLISHED.

SHEET KEYNOTES

- 1 EXISTING ELECTRICAL EQUIPMENT TO REMAIN. PROTECT EXISTING ELECTRICAL EQUIPMENT AND FEEDERS IN CURRENT LOCATION.
- 2 ALL ELECTRICAL IN INDICATED WALL SHALL BE DOCUMENTED, REMOVED, PRESERVED, AND STORED TO BE RE-INSTALLED POST STRUCTURAL UPGRADE TO ORIGINAL CONDITIONS.



ARCHITECTURE • PLANNING • INTERIORS
649 E SOUTH TEMPLE
SALT LAKE CITY, UT 84102
801.355.5915 • www.crsa-us.com

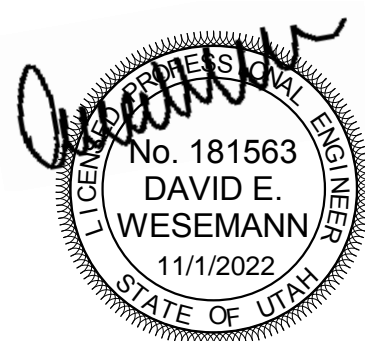
ARCHITECT CRSA 175 S. MAIN ST., STE. 300 SALT LAKE CITY, UT 84111		C/O ZACH HESLOP zheslop@crsa-us.com (801) 746-4974
STRUCTURAL ENGINEER REAVELEY ENGINEERS + ASSOC. 676 EAST 500 SOUTH, SUITE 400 SALT LAKE CITY, UT 84102		C/O JEROD JOHNSON johnson@reaveley.com (801) 486-3883
MECHANICAL ENGINEER COLVIN ENGINEERING ASSOC. 505 E. SOUTH TEMPLE SALT LAKE CITY, UT 84102		C/O ALLEN EVANS aevans@ceai.com (801) 322-2400
ELECTRICAL ENGINEER SPECTRUM ENGINEERING 324 STATE ST., STE. 400 SALT LAKE CITY, UT 84102		C/O MICHAEL FACKRELL michael.fackrell@spectrum.com (801) 328-5151
CM/DC GRAMMOLL CONSTRUCTION 165 S. 750 W. NORTH SALT LAKE, UT 84054		C/O JIM GRAMMOLL jim.grammoll@grammoll.com (801) 295-2341

RIO GRANDE DEPOT SEISMIC UPGRADE

300 SOUTH RIO GRANDE STREET
SALT LAKE CITY, UT 84101

DFCM PROJECT #20229080

STAMP



ISSUE TYPE:	DATE:
BP-01 DD	October 17, 2022
3 ADD#03	11/01/22
PROJECT NUMBER:	220338
DRAWN BY:	JUN
CHECKED BY:	MCF

PHASE 1 LEVEL 2 OVERALL ELECTRICAL DEMOLITION PLAN

1.ED102

ARCHITECT
CRSA
305 S. MAIN ST., STE. 300
SALT LAKE CITY, UT 84111
C/O ZACH HESLOP
zheslo@crsa-us.com
(801)746-4574

STRUCTURAL ENGINEER
REAVLEY ENGINEERS + ASSOC.
675 EAST 5000 SOUTH, SUITE 400
SALT LAKE CITY, UT 84102
C/O JEROD JOHNSON
johnson@reavley.com
(801) 466-3983

MECHANICAL ENGINEER
COLVIN ENGINEERING ASSOC.
505 E. SOUTH TEMPLE
SALT LAKE CITY, UT 84102
C/O ALLEN EVANS
aevans@cea-ut.com
(801) 322-4000

ELECTRICAL ENGINEER
MCKINSTRUM ENGINEERING
324 STATE ST., STE. 400
SALT LAKE CITY, UT 84102
C/O MICHAEL FACKRELL
michael.fackrell@mcengr.com
(801) 328-5151


CM/IG
GRAMMOL CONSTRUCTION
15750 W
NORTH SALT LAKE, UT 84054
JIM JIM GRAMMOL
jim.grammol@grammoli.com
(801) 295-2241

1. PRIOR TO SUBMITTING BID, THE ELECTRICAL CONTRACTOR SHALL VISIT THE SITE AND FIELD VERIFY THE EXTENT OF ELECTRICAL DEMOLITION WORK TO MEET THE INTENT OF THE BID DOCUMENTS AND INCLUDE ALL COSTS IN BID.
2. COORDINATE ELECTRICAL DEMOLITION WORK WITH ALL OTHER TRADES. REFER TO ARCHITECTURE AND MECHANICAL SHEETS AND SPECIFICATIONS FOR COMPLETE DEMOLITION SCOPE. REMOVE, RELOCATE OR MODIFY THE ELECTRICAL SYSTEM AS REQUIRED TO ACCOMMODATE THE SCOPE OF THIS PROJECT.
3. REMOVE ALL DEVICES, RACEWAYS AND WIRING FROM WALLS TO BE REMOVED (INDICATED BY DASHED LINES). WHERE ACTIVE RACEWAYS OCCUR IN WALLS TO BE REMOVED, RE-ROUTE THE RACEWAY WITH ASSOCIATED WIRING TO KEEP THE CIRCUIT OR TERMINAL, WHERE APPROPRIATE, AND BE REPLACED, RELOCATED OR RE-INSTALLED. THEN PROVIDE NEW ELECTRICAL DEVICES IN EQUIPMENT TO MATCH THE ORIGINAL.
4. PRIOR TO REMOVAL OF ANY ELECTRICAL EQUIPMENT OR WIRING, FIELD VERIFY THAT THE EQUIPMENT OR WIRING IS INACTIVE OR NO LONGER IN USE.
5. LOCATE, CONTACT AND MAINTAIN ALL OTHER ELECTRICAL EQUIPMENT, FIXTURES, DEVICES, CONTROLS AND WIRING TO REMAIN OR TO BE REMOVED OR DAMAGED AS PART OF THE DEMOLITION WORK. REPLACE LIKE AND MAKE OPERATIONAL EQUIPMENT AS REQUIRED.
6. REMOVE ALL FIRE ALARM DEVICES WHERE EXISTING WALLS AND CEILINGS ARE BEING REMOVED, WITH ASSOCIATED CONDUIT AND WIRING. EXISTING FIRE ALARM DEVICES AND SYSTEM NOT INSTALLED FOR REMOVAL SHALL REMAIN ACTIVE THROUGHOUT DEMOLITION AND CONSTRUCTION UNTIL THE NEW SYSTEM IS TESTED AND OPERATIONAL. MAINTAIN AND PROTECT ALL FIRE ALARM INITIATING AND OPERATING LOOPS WHERE EXISTING DEVICES ARE REMOVED.
7. REMOVE ALL ABANDONED RACEWAY, CONDUIT, WIRING AND CABLING WHERE ABANDONED PREVIOUS TO THIS PROJECT OR AS A RESULT OF THIS PROJECT. NOT ALL ABANDONED ITEMS ARE SHOWN ON THESE PLANS AND FIELD VERIFICATION OF DEMOLITION SCOPE EXTENT IS REQUIRED.
8. CONTRACTOR TO TRACE AND LABEL ALL EXISTING LOOPS TO REMAIN, THAT ARE CURRENTLY FED FROM PANELS THAT ARE BEING DEMOLISHED OR REMOVED IN THIS PROJECT. THIS MADE AND LABEL BE RE-FED FROM NEW OR REINSTALLED EXISTING PANELS IN FOLLOWING PHASE(S).
9. REFER TO MECHANICAL DRAWINGS FOR MECHANICAL EQUIPMENT DEMOLITION. CONTACT MECHANICAL TRADES AND MECHANICAL CONTRACTOR ASSOCIATED WITH MECHANICAL EQUIPMENT TO BE REMOVED OR RELOCATED.
10. CONTRACTOR TO COORDINATE WITH DTS FOR ALL TELECOMMUNICATIONS AND SECURITY/ACCESS CONTROL CABLING IN WALLS TO BE DEMOLISHED.

- 1 EXISTING ELECTRICAL EQUIPMENT TO REMAIN. PROTECT EXISTING ELECTRICAL EQUIPMENT AND FEEDERS IN CURRENT LOCATION.
- 2 THE WALL BELOW IS BEING DEMOLISHED, VERIFY WITH ARCHITECT HOW DEMOLISHED WALL WILL AFFECT EXISTING EQUIPMENT. CONTRACTOR TO PROTECT EQUIPMENT AND CONNECTIONS, RELOCATE AND EXTEND CONDUIT AND WIRING AS REQUIRED TO MAINTAIN FEEDER TO PANEL.

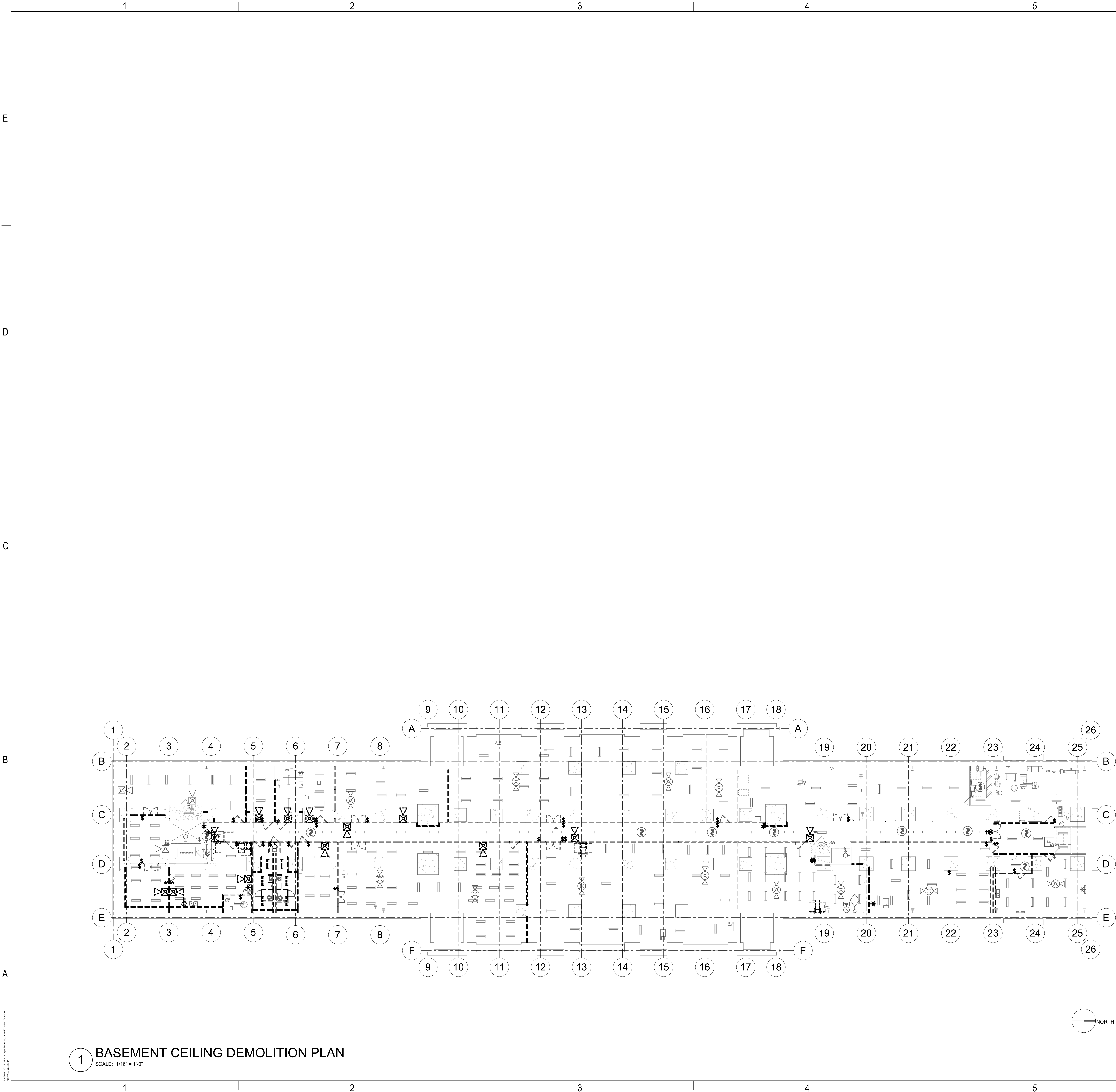


DFCM PROJECT #20229080

ISSUE TYPE:	DATE:
BP-01 DD	October 17, 2022
 3 ADD#03	11/01/22
PROJECT NUMBER:	220338
DRAWN BY:	JJN
CHECKED BY:	MCF

PHASE 1 ATTIC OVERALL ELECTRICAL DEMOLITION PLAN

1.ED103



GENERAL SHEET NOTES

- 1 PRIOR TO SUBMITTING BID, THE ELECTRICAL CONTRACTOR SHALL VISIT THE SITE AND FIELD VERIFY THE EXTENT OF ELECTRICAL DEMOLITION WORK TO MEET THE INTENT OF THE BID DOCUMENTS AND INCLUDE ALL COSTS IN BID.
- 2 COORDINATE ELECTRICAL DEMOLITION WORK WITH ALL OTHER TRADES. REFER TO ARCHITECTURAL AND ALL OTHER SHEETS AND SPECIFICATIONS FOR COMPLETE DEMOLITION SCOPE. REMOVE, RELOCATE OR MODIFY THE ELECTRICAL SYSTEM AS REQUIRED TO ACCOMMODATE THE SCOPE OF THIS PROJECT.
- 3 REMOVE ALL DEVICES, RACEWAYS AND WIRING FROM WALLS TO BE REMOVED (INDICATED BY DASHED LINES). WHERE ACTIVE RACEWAYS OCCUR IN WALLS TO BE REMOVED, RE-ROUTE THE RACEWAY WITH ASSOCIATED WIRING TO KEEP THE CIRCUIT OPERATIONAL WHERE WALLS ARE BEING REPLACED, RELOCATED OR RE-INSTALLED, THEN PROVIDE NEW ELECTRICAL DEVICES IN EQUIPMENT TO MATCH THE ORIGINAL.
- 4 PRIOR TO REMOVAL OF ANY ELECTRICAL EQUIPMENT OR WIRING, FIELD VERIFY THAT THE EQUIPMENT OR WIRING IS INACTIVE OR NO LONGER IN USE.
- 5 LOCATE, PROTECT AND MAINTAIN ALL OTHER ELECTRICAL EQUIPMENT, FIXTURES, DEVICES, CONDUIT AND WIRING IN TACT AND OPERATIONAL. IF REMOVED OR DAMAGED AS PART OF THE DEMOLITION WORK, REPLACE LIKE FOR LIKE AND MAKE OPERATIONAL.
- 6 REMOVE ALL FIRE ALARM DEVICES WHERE EXISTING WALLS AND CEILINGS ARE BEING REMOVED, WITH ASSOCIATED CONDUIT AND WIRING. EXISTING FIRE ALARM DEVICES AND SYSTEM NOT INDICATED FOR REMOVAL SHALL REMAIN ACTIVE THROUGHOUT DEMOLITION AND CONSTRUCTION UNTIL THE NEW SYSTEM IS TESTED AND OPERATIONAL. MAINTAIN ALL CLASS A FIRE ALARM INITIATING AND INDICATING LOOPS WHERE EXISTING DEVICES ARE REMOVED.
- 7 REMOVE ALL ABANDONED RACEWAY, CONDUIT, WIRING AND CABLING WHETHER ABANDONED PREVIOUS TO THIS PROJECT OR AS A RESULT OF THIS PROJECT. NOT ALL ABANDONED ITEMS ARE SHOWN ON THESE PLANS AND FIELD VERIFICATION OF DEMOLITION SCOPE EXTENT IS REQUIRED.
- 8 CONTRACTOR TO TRACE AND LABEL ALL EXISTING LOADS TO REMAIN, THAT ARE CURRENTLY FED FROM PANELS THAT ARE BEING DEMOLISHED OR REMOVED IN THIS PHASE. THESE LOADS TO BE RE-FED FROM NEW OR RE-INSTALLED EXISTING PANELS IN FOLLOWING PHASE(S).
- 9 REFER TO MECHANICAL DRAWINGS FOR MECHANICAL EQUIPMENT DEMOLITION, DISCONNECT, REMOVE AND/OR RELOCATED ALL ELECTRICAL ASSOCIATED WITH MECHANICAL EQUIPMENT TO BE REMOVED OR RELOCATED.
- 10 CONTRACTOR TO COORDINATE WITH DTS FOR ALL TELECOMMUNICATIONS AND SECURITY/ACCESS CONTROL CABLING IN WALLS TO BE DEMOLISHED.

SHEET KEYNOTES



ARCHITECTURE • PLANNING • INTERIORS
649 E SOUTH TEMPLE
SALT LAKE CITY, UT 84102
801.355.5915 • www.crsa-us.com

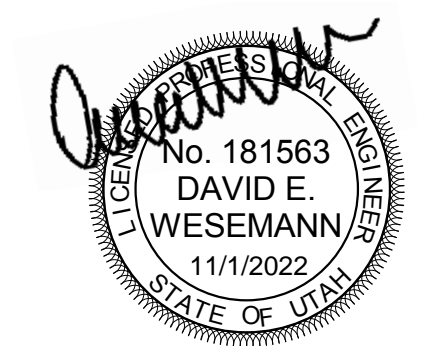
ARCHITECT CRSA 175 S. MAIN ST., STE. 300 SALT LAKE CITY, UT 84111	C/O ZACH HESLOP zheslop@crsa-us.com (801) 746-4974
STRUCTURAL ENGINEER REAVELEY ENGINEERS + ASSOC. 676 EAST 500 SOUTH, SUITE 400 SALT LAKE CITY, UT 84102	C/O JEROD JOHNSON johnson@reaveley.com (801) 486-3883
MECHANICAL ENGINEER COLVIN ENGINEERING ASSOC. 505 E. SOUTH TEMPLE SALT LAKE CITY, UT 84102	C/O ALLEN EVANS aevans@cewa-ut.com (801) 322-2400
ELECTRICAL ENGINEER SPECTRUM ENGINEERING 324 STATE ST., STE. 400 SALT LAKE CITY, UT 84102	C/O MICHAEL FACKRELL michael.fackrell@speceng.com (801) 328-5151
CM/DC GRAMMOLL CONSTRUCTION 165 S. 750 W. NORTH SALT LAKE, UT 84054	C/O JIM GRAMMOLL jim.grammoll@grammoll.com (801) 295-2341

RIO GRANDE DEPOT SEISMIC UPGRADE

300 SOUTH RIO GRANDE STREET
SALT LAKE CITY, UT 84101

DFCM PROJECT #20229080

STAMP



ISSUE TYPE:	DATE:
BP-01 DD	October 17, 2022
3 ADD#03	11/01/22
PROJECT NUMBER:	220338
DRAWN BY:	JJN
CHECKED BY:	MCF

PHASE 1 BASEMENT OVERALL RCP ELECTRICAL DEMOLITION PLAN

1.ED110

ARCHITECT CRSA 175 S. MAIN ST., STE. 300 SALT LAKE CITY, UT 84111	C/O ZACH HESLOP zheslop@crsa-us.com (801) 476-8774
STRUCTURAL ENGINEER REAVLEY ENGINEERS + ASSOC. 675 EAST 5000 SUITE 400 SALT LAKE CITY, UT 84102	C/O JEROD JOHNSON johnson@reavley.com (801) 486-3553
MECHANICAL ENGINEER COLVIN ENGINEERING ASSOC. 505 E. SOUTH TEMPLE SALT LAKE CITY, UT 84102	C/O ALLEN EVANS aevans@ceea-tv.com (801) 322-2240
ELECTRICAL ENGINEER SPECTRUM ENGINEERING 324 STATE ST., STE. 400 SALT LAKE CITY, UT 84102	C/O MICHAEL FACKRELL michael.fackrell@spectrum.com (801) 328-5151
CM/CG GRAMOLL CONSTRUCTION 1750 W NORTH SALT LAKE, UT 84054	C/O JIM GRAMOLL jim.gramoll@gramoll.com (801) 295-2341

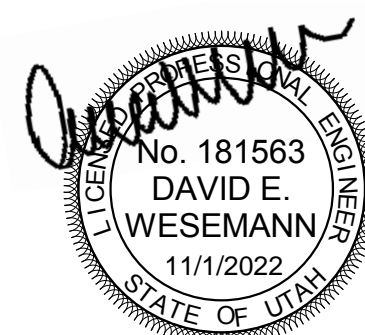
1. PRIOR TO SUBMITTING BID, THE ELECTRICAL CONTRACTOR SHALL VISIT THE SITE AND FIELD VERIFY THE EXTENT OF ELECTRICAL DEMOLITION WORK TO MEET THE INTENT OF THE BID DOCUMENTS AND INCLUDE ALL COSTS IN BID.
2. COORDINATE ELECTRICAL DEMOLITION WORK WITH ALL OTHER TRADES. REFER TO ARCHITECTURAL AND ALL OTHER SHEETS AND SPECIFICATIONS FOR COMPLETE DEMOLITION SCOPE. REMOVE, RELOCATE OR REPAIR THE ELECTRICAL SYSTEM AS REQUIRED TO ACCOMMODATE THE SCOPE OF THIS PROJECT.
3. REMOVE ALL DEVICES, RACEWAYS AND WIRING FROM WALLS TO BE REMOVED (INDICATED BY RED LINES). WHERE ACTIVE RACEWAYS OCCUR IN WALLS TO BE REMOVED, RE-ROUTE THE RACEWAY WITH ASSOCIATED WIRING TO KEEP THE CIRCUIT OPERATIONAL. WHERE WALLS ARE BEING REPLACED, RELOCATED OR RE-INSTALLED, THEN PROVIDE NEW ELECTRICAL DEVICES IN EQUIPMENT TO MATCH THE ORIGINAL.
4. PRIOR TO REMOVAL OF ANY ELECTRICAL EQUIPMENT OR WIRING, FIELD VERIFY THAT THE EQUIPMENT OR WIRING IS INACTIVE OR NO LONGER IN USE.
5. LOCATE, PROTECT AND MAINTAIN ALL OTHER ELECTRICAL EQUIPMENT, FIXTURES, DEVICES, CONDUIT AND WIRING IN TACT AND OPERATIONAL. IF REMOVED OR DAMAGED AS PART OF THE DEMOLITION WORK, REPLACE LIKE FOR LIKE AND MAKE OPERATIONAL.
6. REMOVE ALL FIRE ALARM DEVICES WHERE EXISTING WALLS AND CEILINGS ARE BEING REMOVED. REMOVE ALL EXISTING FIRE ALARM DEVICES, INCLUDING ALARM BELL AND SILENCE NOT INDICATED FOR REMOVAL SHALL REMAIN ACTIVE THROUGHOUT DEMOLITION AND CONSTRUCTION UNTIL THE NEW SYSTEM IS TESTED AND COMMISSIONED. MAINTAIN ALL EXISTING FIRE ALARM INITIATING AND INDICATING LOOPS WHERE EXISTING DEVICES ARE REMOVED.
7. REMOVE ALL ABANDONED RACEWAY, CONDUIT, WIRING AND CABLING WHETHER ABANDONED PREVIOUS TO THIS PROJECT OR AS A RESULT OF THIS PROJECT. NOT ALL ABANDONED ITEMS ARE SHOWN ON THESE PLANS AND FIELD VERIFICATION OF DEMOLITION SCOPE EXTENT IS REQUIRED.
8. CONTRACTOR TO TRACE AND LABEL ALL EXISTING LOADS TO REMAIN, THAT ARE CURRENTLY FEED FROM PANELS THAT ARE BEING DEMOLISHED OR REMOVED IN THIS PHASE. THESE LOADS TO BE RE-FEED FROM NEW OR RE-INSTALLED EXISTING PANELS IN FOLLOWING PHASE(S).
9. REFER TO MECHANICAL DRAWINGS FOR MECHANICAL EQUIPMENT DEMOLITION. DISCONNECT, REMOVE AND/OR RELOCATE ALL ELECTRICAL ASSOCIATED WITH MECHANICAL EQUIPMENT TO BE REMOVED OR RELOCATED.
10. CONTRACTOR TO COORDINATE WITH DTS FOR ALL TELECOMMUNICATIONS AND SECURITY ACCESS CONTROL CABLING IN WALLS TO BE DEMOLISHED.

1 IN AREA WHERE CEILING IS TO BE DEMOLISHED, CONTRACTOR TO PRESERVE, DISCONNECT, AND STORE EXISTING FIRE ALARM DEVICES, SECURITY DEVICES, TELECOM DEVICES, EXIT SIGNS, LIGHTING EQUIPMENT, AND LIGHT FIXTURES ON CEILING TO BE REINSTALLED IN A LATER PHASE.

300 SOUTH RIO GRANDE STREET
SALT LAKE CITY, UT 84101

DFCM PROJECT #20229080

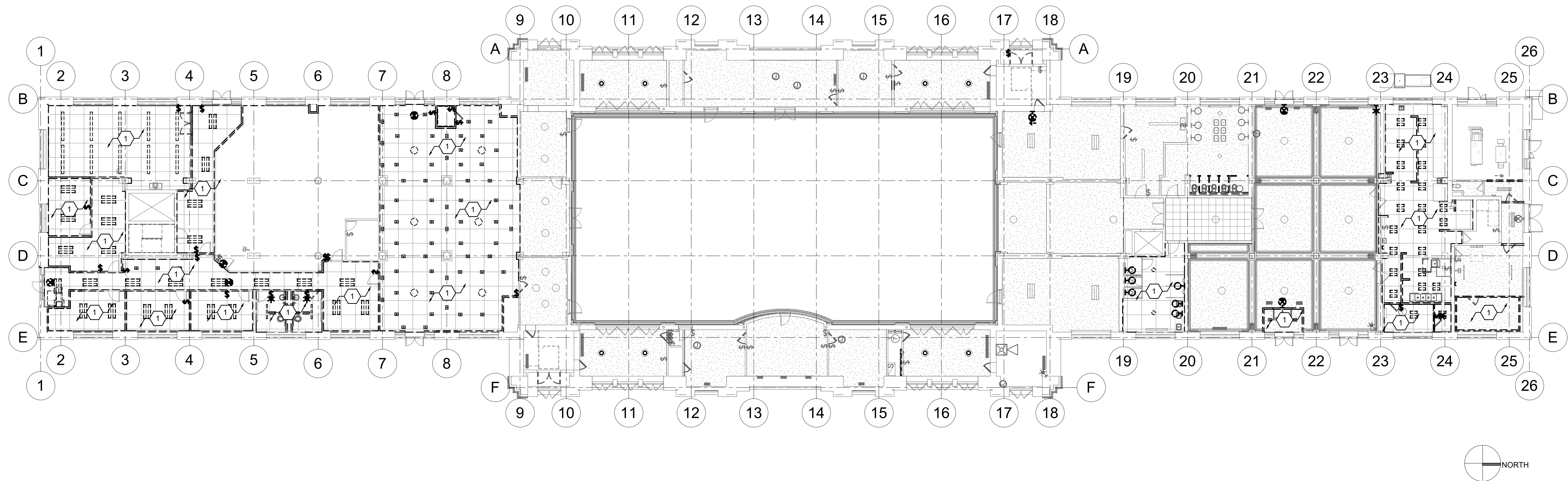
STAMP



ISSUE TYPE: BP-01 DD		DATE: October 17, 2022
	ADD#03	11/01/22
PROJECT NUMBER:		220338
DRAWN BY:		JJN
CHECKED BY:		MCF

PHASE 1 LEVEL 1
OVERALL RCP
ELECTRICAL
DEMOLITION PLAN

1.ED111



1 LEVEL 1 CEILING OVERALL DEMOLITION PLAN

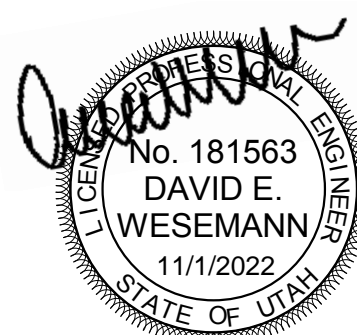
1. PRIOR TO SUBMITTING BID, THE ELECTRICAL CONTRACTOR SHALL VISIT THE SITE AND FIELD VERIFY THE EXTENT OF ELECTRICAL DEMOLITION WORK TO MEET THE INTENT OF THE BID DOCUMENTS AND INCLUDE ALL COSTS IN BID.
2. COORDINATE ELECTRICAL DEMOLITION WORK WITH ALL OTHER TRADES. REFER TO ARCHITECTURAL AND ALL OTHER SHEETS & SPECIFICATIONS FOR COMPLETE DEMOLITION REQUIREMENTS. REPAIR OR MODIFY THE ELECTRICAL SYSTEM AS REQUIRED TO ACCOMMODATE THE SCOPE OF THIS PROJECT.
3. REMOVE ALL DEVICES, RACEWAYS AND WIRING FROM WALLS TO BE REMOVED (INDICATED BY DASHED LINES). WHERE ACTIVE RACEWAYS OCCUR IN WALLS TO BE REMOVED, RE-ROUTE THE RACEWAY WITH ASSOCIATED WIRING TO KEEP THE CIRCUIT OPERATIONAL. WHERE WALLS ARE TO BE REPLACED, RELOCATED OR RE-INSTALLED, THEN PROVIDE NEW ELECTRICAL DEVICES IN EQUIPMENT TO MATCH THE ORIGINAL.
4. PRIOR TO REMOVE OF ANY ELECTRICAL EQUIPMENT OR WIRING, FIELD VERIFY THAT THE EQUIPMENT OR WIRING IS INACTIVE OR NO LONGER IN USE.
5. LOCATE, PROTECT AND MAINTAIN ALL OTHER ELECTRICAL EQUIPMENT, FIXTURES, DEVICES, CONDUIT AND WIRING IN TACT AND OPERATIONAL. IF REMOVED OR DAMAGED AS PART OF THE DEMOLITION WORK, REPLACE LIKE FOR LIKE AND MAKE OPERATIONAL.
6. REMOVE ALL ALARM DEVICES WHERE EXISTING WALLS AND CEILINGS ARE BEING REMOVED. RELOCATE EXISTING ALARMS TO NEW WALLS OR CEILINGS. IF EXISTING ALARMS AND SYSTEM NOT INDICATED FOR REMOVAL, SHALL REMAIN ACTIVE THROUGHOUT DEMOLITION AND CONSTRUCTION UNTIL THE NEW SYSTEM IS TESTED AND OPERATIONAL. MAINTAIN AND REPAIR ALL ALARM INITIATING AND INDICATING LOOPS WHERE EXISTING DEVICES ARE REMOVED.
7. REMOVE ALL ABANDONED RACEWAY, CONDUIT, WIRING AND CABLING WHERE ABANDONED PERMITTED TO THIS PROJECT OR AS A RESULT OF THIS PROJECT. NOT ALL ABANDONED ITEMS ARE SHOWN ON THESE PLANS AND FIELD VERIFICATION OF DEMOLITION SCOPE EXTENT IS REQUIRED.
8. CONTRACTOR TO TRACE AND LABEL ALL EXISTING LOADS TO REMAIN, THAT ARE CURRENTLY FED FROM PANELS THAT ARE BEING DEMOLISHED OR REMOVED IN THIS PROJECT. THIS LOADS TO BE RE-FED FROM NEW OR REINSTALLED EXISTING PANELS IN FOLLOWING PAGE(S)).
9. REFER TO MECHANICAL DRAWINGS FOR MECHANICAL EQUIPMENT DEMOLITION. DISCONNECT, REMOVE AND/OR RELOCATE ALL ELECTRICAL ASSOCIATED WITH MECHANICAL EQUIPMENT TO BE REMOVED OR RELOCATED.
10. CONTRACTOR TO COORDINATE WITH DTS FOR ALL TEL/COMMUNICATIONS AND SECURITY/ACCESS CONTROL, CABLING IN WALLS TO BE DEMOLISHED.

- 1 IN AREA WHERE CEILING IS TO BE DEMOLISHED, CONTRACTOR TO PRESERVE, DISCONNECT, AND STORE EXISTING FIRE ALARM DEVICES, SECURITY DEVICES, TELECOM DEVICES, EXIT SIGNS, LIGHTING EQUIPMENT, AND LIGHT FIXTURES ON CEILING TO BE REINSTALLED IN A LATER PHASE.
- 2 HISTORIC LIGHT FIXTURES TO BE REMOVED AND STORED TO BE REINSTALLED AT A LATER PHASE.

300 SOUTH RIO GRANDE STREET
SALT LAKE CITY, UT 84101

DFCM PROJECT #20229080

STAMI



ISSUE TYPE:

BP-01 DD

DATE-

DATE: October 17, 2022

[illegible]

1000

PROJECT NUMBER	
----------------	--

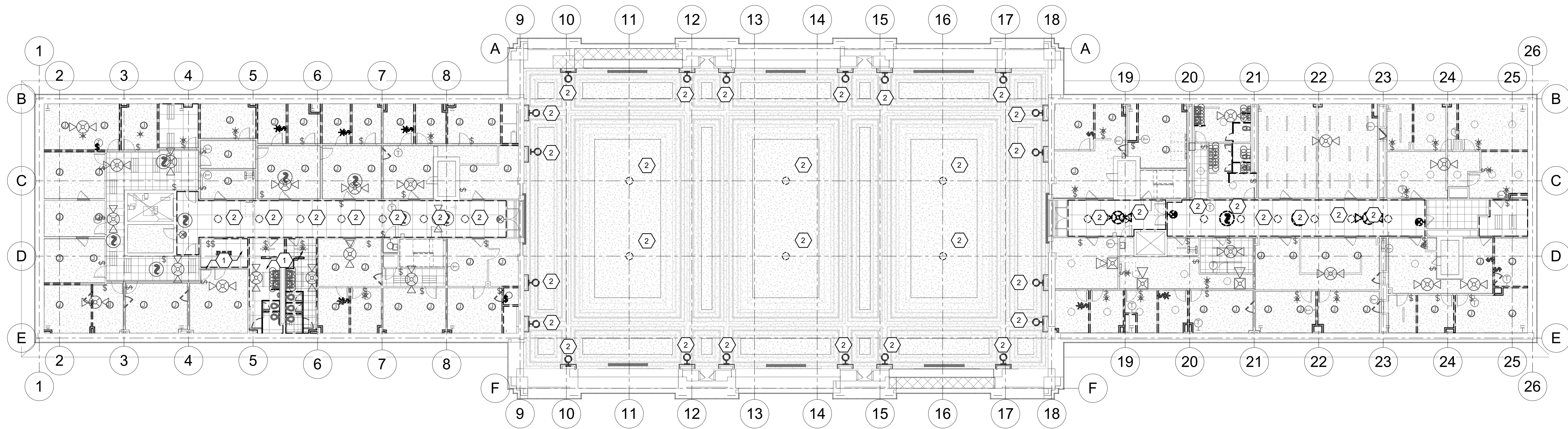
22033

DRAWN BY:

JJN

PHASE 1 LEVEL 2
OVERALL RCP
ELECTRICAL
DEMOLITION PLAN

1.ED112



A compass rose with a circle divided into four quadrants by a vertical and a horizontal line. The horizontal line is thicker than the vertical one. The word "NORTH" is written in capital letters to the right of the circle, aligned with the horizontal line.

1 LEVEL 2 CEILING OVERALL DEMOLITION PLAN

SCALE: 1/16" = 1'-0"



Mechanical Engineering
Electrical Engineering
Technology Engineering
Acoustical Engineering
Lighting Design
Theatre Design
Fire Protection Engineering
Building Commissioning

Salt Lake City | Phoenix | St. Louis | Baltimore
[p] 800-678-7077
www.spectrum-engineers.com

Electrical Addendum 03 BP-02

Date: November 1, 2022

To:

Company:

Job:

Rio Grande

Job No:

Cc:

From:

Michael Fackrell, PM

Email:

Michael.fackrell@speceng.com

Phone:

801-401-8447

Re:

This Addendum shall be considered part of the Contract Documents and Project Manual for the above mentioned project as though it had been issued at the same time and shall be incorporated integrally therewith. Where provisions of the following supplementary data differ from those of the original Contract Documents and Project Manual, the Addendum shall govern and take precedence.

Electrical Addendum

Drawings updated to show individual devices on exterior walls.

END OF ADDENDUM

Attachments: Rio Grande Depot - BP-02 - ADD 03 - 11-01-22

E
D
C
B
A

1

2

3

4

5

6

GENERAL SHEET NOTES

- 1 PRIOR TO SUBMITTING BID, THE ELECTRICAL CONTRACTOR SHALL VISIT THE SITE AND FIELD VERIFY THE EXTENT OF ELECTRICAL DEMOLITION WORK TO MEET THE INTENT OF THE BID DOCUMENTS AND INCLUDE ALL COSTS IN BID.
- 2 COORDINATE ELECTRICAL DEMOLITION WORK WITH ALL OTHER TRADES. REFER TO ARCHITECTURAL AND ALL OTHER SHEETS AND SPECIFICATIONS FOR COMPLETE DEMOLITION SCOPE. REMOVE, RELOCATE OR MODIFY THE ELECTRICAL SYSTEM AS REQUIRED TO ACCOMMODATE THE SCOPE OF THIS PROJECT.
- 3 REMOVE ALL DEVICES, RACEWAYS AND WIRING FROM WALLS TO BE REMOVED (INDICATED BY DASHED LINES). WHERE ACTIVE RACEWAYS OCCUR IN WALLS TO BE REMOVED, RE-ROUTE THE RACEWAY WITH ASSOCIATED WIRING TO KEEP THE CIRCUIT OPERATIONAL WHERE WALLS ARE BEING REPLACED, RELOCATED OR RE-INSTALLED, THEN PROVIDE NEW ELECTRICAL DEVICES IN EQUIPMENT TO MATCH THE ORIGINAL.
- 4 PRIOR TO REMOVAL OF ANY ELECTRICAL EQUIPMENT OR WIRING, FIELD VERIFY THAT THE EQUIPMENT OR WIRING IS INACTIVE OR NO LONGER IN USE.
- 5 LOCATE, PROTECT AND MAINTAIN ALL OTHER ELECTRICAL EQUIPMENT, FIXTURES, DEVICES, CONDUIT AND WIRING IN FACT AND OPERATIONAL. IF REMOVED OR DAMAGED AS PART OF THE DEMOLITION WORK, REPLACE LIKE FOR LIKE AND MAKE OPERATIONAL.
- 6 REMOVE ALL FIRE ALARM DEVICES WHERE EXISTING WALLS AND CEILINGS ARE BEING REMOVED, WITH ASSOCIATED CONDUIT AND WIRING. EXISTING FIRE ALARM DEVICES AND SYSTEM NOT INDICATED FOR REMOVAL SHALL REMAIN ACTIVE THROUGHOUT DEMOLITION AND CONSTRUCTION UNTIL THE NEW SYSTEM IS TESTED AND OPERATIONAL. MAINTAIN ALL CLASS A FIRE ALARM INITIATING AND INDICATING LOOPS WHERE EXISTING DEVICES ARE REMOVED.
- 7 REMOVE ALL ABANDONED RACEWAY, CONDUIT, WIRING AND CABLING WHETHER ABANDONED PREVIOUS TO THIS PROJECT OR AS A RESULT OF THIS PROJECT. NOT ALL ABANDONED ITEMS ARE SHOWN ON THESE PLANS AND FIELD VERIFICATION OF DEMOLITION SCOPE EXTENT IS REQUIRED.
- 8 CONTRACTOR TO TRACE AND LABEL ALL EXISTING LOADS TO REMAIN, THAT ARE CURRENTLY FED FROM PANELS THAT ARE BEING DEMOLISHED OR REMOVED IN THIS PHASE. THESE LOADS TO BE RE-FED FROM NEW OR RE-INSTALLED EXISTING PANELS IN FOLLOWING PHASE(S).
- 9 REFER TO MECHANICAL DRAWINGS FOR MECHANICAL EQUIPMENT DEMOLITION. DISCONNECT, REMOVE AND/OR RELOCATED ALL ELECTRICAL ASSOCIATED WITH MECHANICAL EQUIPMENT TO BE REMOVED OR RELOCATED.
- 10 CONTRACTOR TO COORDINATE WITH DTS FOR ALL TELECOMMUNICATIONS AND SECURITY/ACCESS CONTROL CABLING IN WALLS TO BE DEMOLISHED.

SHEET KEYNOTES

- 1 DOCUMENT, DE-ENERGIZE, PRESERVE, DISCONNECT, REMOVE, AND STORE EXISTING ELECTRICAL GEAR. THE FOLLOWING SHALL BE DOCUMENTED ON THE AS BUILDS (RACEWAY SIZE(S), CONDUCTOR SIZE(S), BREAKER SIZE(S), LOCATION(S), AND PANEL CIRCUITING). ELECTRICAL GEAR TO BE RE-INSTALLED TO ORIGINAL CONDITIONS PER FUTURE BP-03.
- 2 THE ELECTRICAL EQUIPMENT INDICATED IS EXISTING TO REMAIN. CONTRACTOR TO PROTECT EQUIPMENT.
- 3 IN FILLED REGION AREAS, REMOVE ALL CONDUIT AND CONDUCTORS. ALL CONDUIT AND WIRING SHALL BE DOCUMENTED, PRESERVED, AND STORED TO BE RE-INSTALLED POST STRUCTURAL UPGRADE TO ORIGINAL CONDITIONS.
- 4 DOCUMENT, DISCONNECT, AND REMOVE ALL CONDUIT AND CONDUCTORS ASSOCIATED WITH DEMOLISHED WATER HEATER. THE FOLLOWING SHALL BE DOCUMENTED ON THE AS BUILDS (RACEWAY SIZE, CONDUCTOR SIZE, BREAKER SIZE, LOCATION, AND PANEL CIRCUITING). WATER HEATER TO BE RE-INSTALLED PER BP-3 TO ORIGINAL CONDITIONS.
- 5 DOCUMENT, DISCONNECT, AND REMOVE ALL CONDUIT AND CONDUCTORS ASSOCIATED WITH DEMOLISHED EXHAUST FAN. THE FOLLOWING SHALL BE DOCUMENTED ON THE AS BUILDS (RACEWAY SIZE, CONDUCTOR SIZE, BREAKER SIZE, LOCATION, AND PANEL CIRCUITING). EXHAUST FAN POWER TO BE RE-INSTALLED.
- 6 DOCUMENT, DISCONNECT, AND REMOVE ALL CONDUIT AND CONDUCTORS ASSOCIATED WITH DEMOLISHED CONDENSATE PUMP. THE FOLLOWING SHALL BE DOCUMENTED ON THE AS BUILDS (RACEWAY SIZE, CONDUCTOR SIZE, BREAKER SIZE, LOCATION, AND PANEL CIRCUITING). CONDENSATE PUMP TO BE RE-INSTALLED.
- 7 DOCUMENT, DISCONNECT, AND REMOVE ALL CONDUIT AND CONDUCTORS ASSOCIATED WITH DEMOLISHED HEAT EXCHANGER. THE FOLLOWING SHALL BE DOCUMENTED ON THE AS BUILDS (RACEWAY SIZE, CONDUCTOR SIZE, BREAKER SIZE, LOCATION, AND PANEL CIRCUITING). HEAT EXCHANGER TO BE RE-INSTALLED.
- 8 DOCUMENT, DISCONNECT, AND REMOVE ALL CONDUIT AND CONDUCTORS ASSOCIATED WITH DEMOLISHED STEAM CONDENSATE. THE FOLLOWING SHALL BE DOCUMENTED ON THE AS BUILDS (RACEWAY SIZE, CONDUCTOR SIZE, BREAKER SIZE, LOCATION, AND PANEL CIRCUITING). STEAM CONDENSATE TO BE RE-INSTALLED.
- 9 DOCUMENT, DISCONNECT, AND REMOVE ALL CONDUIT AND CONDUCTORS ASSOCIATED WITH MECHANICAL SYSTEM. THE FOLLOWING SHALL BE DOCUMENTED ON THE AS BUILDS (RACEWAY SIZE, CONDUCTOR SIZE, BREAKER SIZE, LOCATION, AND PANEL CIRCUITING). MECHANICAL SYSTEM TO BE RE-INSTALLED.
- 10 ON ALL PERIMETER WALLS BEING STRUCTURALLY UPGRADED WITH SHOTCRETE - DOCUMENT, DISCONNECT, AND REMOVE ALL CONDUIT, CONDUCTORS, AND DEVICES BACK TO 10 FEET FROM WALL. THE FOLLOWING SHALL BE DOCUMENTED ON THE AS BUILDS (RACEWAY SIZE, CONDUCTOR SIZE, BREAKER SIZE, LOCATION, AND PANEL CIRCUITING). ELECTRICAL DEVICES TO BE RE-INSTALLED PER BP-03.
- 11 PROTECT AND PRESERVE ELEVATOR EQUIPMENT ELECTRICAL CONNECTIONS TO ELEVATOR EQUIPMENT.
- 12 DEMOLISH ELECTRICAL CONNECTION TO LIFT STATION.
- 13 DEMOLISH ELECTRICAL CONNECTION TO WATER HEATER.
- 14 EXISTING LIFT STATION TO REMAIN. ELECTRICAL CONTRACTOR TO PRESERVE ELECTRICAL CONNECTION OR PROVIDE NEW TEMPORARY CONNECTION AS NEEDED.

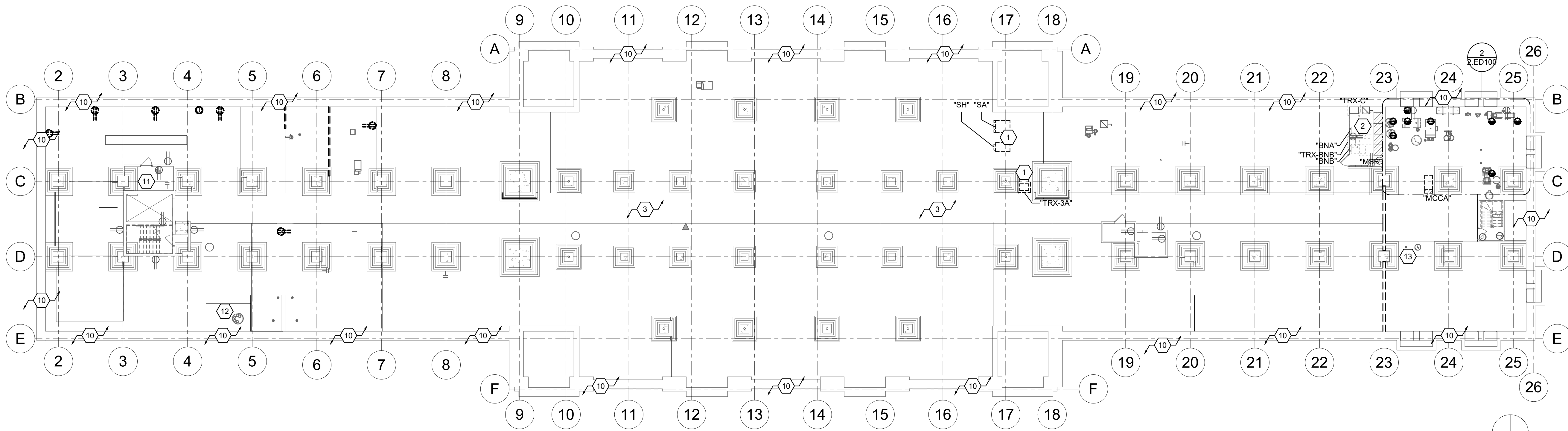


ARCHITECTURE • PLANNING • INTERIORS
649 E SOUTH TEMPLE
SALT LAKE CITY, UT 84102
801.355.5915 • www.crsa-us.com

ARCHITECT	CRSA	C/O ZACH HESLOP 175 S. MAIN ST., STE. 300 SALT LAKE CITY, UT 84111 zheslop@crsa-us.com (801) 746-4974
STRUCTURAL ENGINEER	REAVELEY ENGINEERS + ASSOC.	C/O JEROD JOHNSON 575 EAST 500 SOUTH, SUITE 400 SALT LAKE CITY, UT 84102 johnson@reaveley.com (801) 486-3883
MECHANICAL ENGINEER	COLVIN ENGINEERING ASSOC.	C/O ALLEN EVANS 505 E. SOUTH TEMPLE SALT LAKE CITY, UT 84102 aevans@ceaa.com (801) 322-2400
ELECTRICAL ENGINEER	SPECTRUM ENGINEERING	C/O MICHAEL FACKRELL 324 STATE ST., STE. 400 SALT LAKE CITY, UT 84102 michael.fackrell@spectrum.com (801) 328-5151
CM/CG	GRAMMOLL CONSTRUCTION	C/O JIM GRAMMOLL 165 S. 150 W NORTH SALT LAKE, UT 84054 jim.grammoll@grammoll.com (801) 295-2341

2 PHASE 2 ENLARGED ELECTRICAL DEMO PLAN - BASEMENT MECHANICAL ROOM

SCALE: 1/4" = 1'-0"



1 PHASE 2 BASEMENT OVERALL ELECTRICAL DEMOLITION PLAN

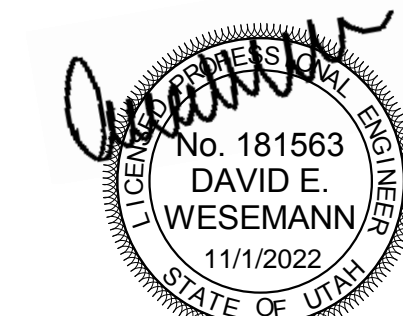
SCALE: 1/16" = 1'-0"

RIO GRANDE DEPOT SEISMIC UPGRADE

300 SOUTH RIO GRANDE STREET
SALT LAKE CITY, UT 84101

DFCM PROJECT #20229080

STAMP



ISSUE TYPE:	DATE:
BP-02 DD	October 17, 2022
1 ADD#01	10/19/22
2 ADD#02	10/31/22
3 ADD#03	11/01/22
PROJECT NUMBER:	220338
DRAWN BY:	JJN
CHECKED BY:	MCF

PHASE 2 BASEMENT OVERALL ELECTRICAL DEMOLITION PLAN

2.ED100

CRSA 175 S. MAIN ST., STE. 300 SALT LAKE CITY, UT 84111	JO ZACH HESLOP zheslop@crsa-us.com (801) 476-6742
STRUCTURAL ENGINEER REAVLEY ENGINEERS + ASSOC. 675 EAST 400 SOUTH, SUITE 400 SALT LAKE CITY, UT 84102	JO JEROD JOHNSON johnson@reavley.com (435) 486-3983
Mechanical Engineer COLVIN ENGINEERING 505 E. SOUTH TEMPLE SALT LAKE CITY, UT 84102	JO ALLEN EVANS evans@ce-us.com (801) 322-4400
Electrical Engineer SPECTRUM ENGINEERING 324 STATE ST., STE. 400 SALT LAKE CITY, UT 84102	JO MICHAEL FACKRE michael.fackre@space.com (801) 328-5111
CM/CG GRANMILL CONSTRUCTION 155 S 750 W NORTH SALT LAKE, UT 84054	JO JIM GRAMMILL jim.grammill@gramm.com (801) 295-2341

1. PRIOR TO SUBMITTING BID THE ELECTRICAL CONTRACTOR SHALL VISIT THE SITE AND FIELD VERIFY THE EXTENT OF ELECTRICAL DEMOLITION WORK TO MEET THE INTENT OF THE BID DOCUMENTS AND INCLUDE ALL COSTS IN BID.
2. COORDINATE ELECTRICAL DEMOLITION WORK WITH ALL OTHER TRADES. REFER TO ELECTRICAL AND MECHANICAL AND SPECIFICATIONS FOR COMPLETE DEMOLITION SCOPE. REMOVE, RELOCATE OR MODIFY THE ELECTRICAL SYSTEMS REQUIRED TO ACCOMMODATE THE SCOPE OF THIS PROJECT.
3. REMOVE ALL DEVICES, RACEWAYS AND WIRING FROM WALLS TO BE REMOVED (INDICATED BY DASHED LINES). WHERE ACTIVE RACEWAYS OCCUR IN WALLS TO BE REMOVED, RE-ROUTE THE RACEWAY WITH ASSOCIATED WIRING TO KEEP THE CIRCUIT OPEN AND CONTINUOUS WHERE POSSIBLE. IF THE RACEWAY IS LOCATED OR INSTALLED, THEN PROVIDE NEW ELECTRICAL DEVICES IN EQUIPMENT TO MATCH THE ORIGINAL.
4. PRIOR TO REMOVAL OF ANY ELECTRICAL EQUIPMENT OR WIRING, FIELD VERIFY THAT THE EQUIPMENT OR WIRING IS INACTIVE OR NO LONGER IN USE.
5. LOCATE, PROTECT AND MAINTAIN ALL OTHER ELECTRICAL EQUIPMENT, FIXTURES, DEVICES, CONDUIT AND WIRING IN TACT AND OPERATIONAL. IF REMOVED OR DAMAGED AS PART OF THE DEMOLITION WORK, REPLACE LIKE FOR LIKE AND MAKE OPERATIONAL.
6. REMOVE ALL FIRE ALARM DEVICES WHERE EXISTING WALLS AND CEILINGS ARE BEING REMOVED, WITH ASSOCIATED CONDUIT AND WIRING. EXISTING FIRE ALARM DEVICES AND SYSTEM NOT INDICATED FOR REMOVAL SHALL REMAIN ACTIVE THROUGHOUT DEMOLITION WORK AND BE MAINTAINED IN TACT AND OPERATIONAL. TESTED AND OPERATIONAL. MAINTAIN ALL CLASS A FIRE ALARM INITIATING AND INDICATING LOOPS WHERE EXISTING DEVICES ARE REMOVED.
7. REMOVE ALL ABANDONED RACEWAY, CONDUIT, WIRING AND CABLEING WHETHER ABANDONED PREVIOUS TO THIS PROJECT OR AS A RESULT OF THIS PROJECT. NOT ALL ABANDONED ITEMS ARE SHOWN ON THESE PLANS AND FIELD VERIFICATION OF DEMOLITION SCOPE EXTENT IS REQUIRED.
8. CONTRACTOR TO TRACE AND LABEL ALL EXISTING LOADS TO REMAIN. THAT ARE CURRENTLY FED FROM PANELS THAT ARE BEING DEMOLISHED OR REMOVED IN THIS PROJECT. THESE LOADS TO BE RE-FED FROM NEW OR RE-INSTALLED EXISTING PANELS IN FOLLOWING PHASE(S).
9. REFER TO MECHANICAL DRAWINGS FOR MECHANICAL EQUIPMENT DEMOLITION/DISCONNECT. REMOVE AND/OR RELOCATED ALL ELECTRICAL ASSOCIATED WITH MECHANICAL EQUIPMENT TO BE REMOVED OR RELOCATED
10. CONTRACTOR TO COORDINATE WITH DTS FOR ALL TELECOMMUNICATIONS AND SECURITY/ACCESS CONTROL, CABLEING IN WALLS TO BE DEMOLISHED.

- 1 EXISTING ELECTRICAL EQUIPMENT TO REMAIN. PROTECT EXISTING ELECTRICAL EQUIPMENT AND FEEDERS IN CURRENT LOCATION.
- 2 ON ALL PERIMETER WALLS BEING STRUCTURALLY UPGRADED WITH SHOTCRETE - DISCONNECT, DISCONNECT, AND REMOVE ALL CONDUIT, CONDUCTORS, AND DEVICES BELOW 10 FEET FROM WALL. THE FOLLOWING SHALL BE DOCUMENTED ON THE AS-BUILT: RACEWAY SIZE, CONDUCTOR SIZE, BREAKER SIZE, LOCATION, AND PANEL CIRCUITING). ELECTRICAL DEVICES TO BE RE-INSTALLED PER BP-03.
- 3 REMOVE ALL ELECTRICAL CONNECTIONS TO STEAM BOILER. COORDINATE WITH MECHANICAL CONTRACTOR DURING DEMOLITION.

300 SOUTH RIO GRANDE STREET
SALT LAKE CITY, UT 84101

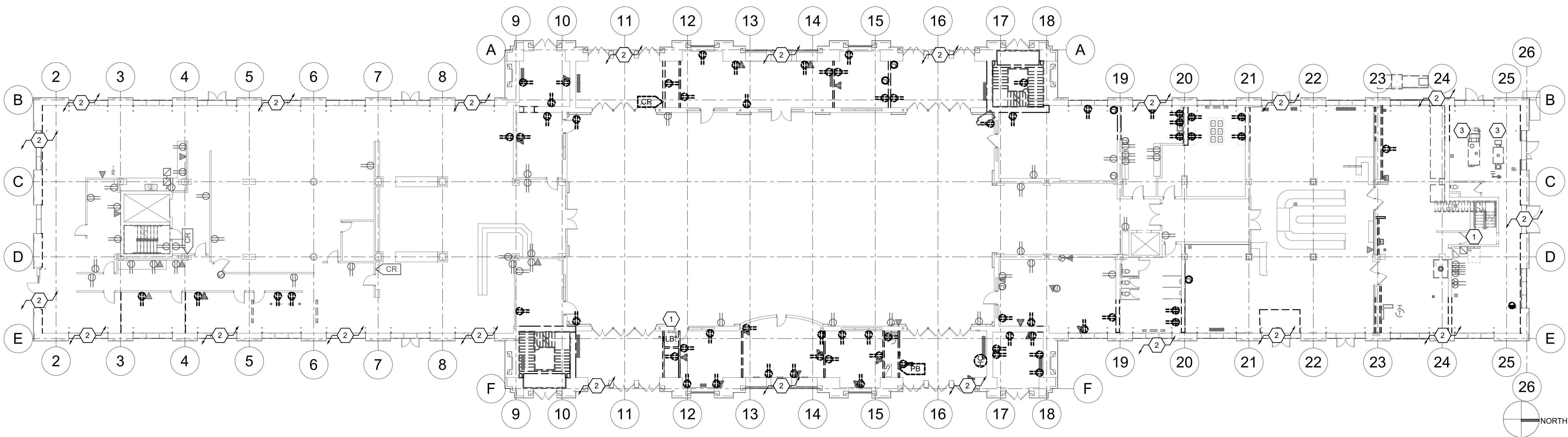
DFCM PROJECT #20229080

STAMP

ISSUE TYPE:		DATE:	
BP-02 DD		October 17, 2022	
△			
2	ADD#02		10/31/22
3	ADD#03		11/01/22
PROJECT NUMBER:		220338	
DRAWN BY:		JJN	
CHECKED BY:		MCF	

PHASE 2 LEVEL 1 OVERALL ELECTRICAL DEMOLITION PLAN

2.ED101



1 PHASE 2 LEVEL 1 OVERALL ELECTRICAL DEMOLITION PLAN
SCALE: 1/16" = 1'-0"

ARCHITECT CRSA 175 S MAIN ST., STE 300 SALT LAKE CITY, UT 84111	C/O ZACH HESLOP zheslop@crsa.com (801)746-6274
STRUCTURAL ENGINEER REAVLEY ENGINEERS + ASSOC. 767 EAST 500 SOUTH, SUITE 400 SALT LAKE CITY, UT 84102	C/O JERROD JOHNSON johnson@reavley.com (801)466-3583
MECHANICAL ENGINEER COLVIN ENGINEERING ASSOC. 505 E. SOUTH TEMPLE SALT LAKE CITY, UT 84102	C/O ALLEN EVANS aeavans@colvin.com (801)322-2400
ELECTRICAL ENGINEER SPECTRUM ENGINEERING 324 STATE ST., STE. 400 SALT LAKE CITY, UT 84102	C/O MICHAEL FACKRELL michael.fackrell@spectrum.com (801)328-5151
CIVIL SANDHILL CONSTRUCTION 155 S 750 W NORTH SALT LAKE, UT 84054	C/O JIM GRAMOLL jim.gramoll@gramoll.com (801)295-2341

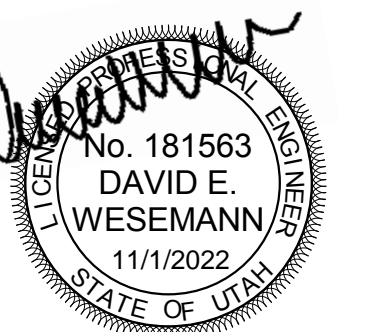
1. PRIOR TO SUBMITTING BID THE ELECTRICAL CONTRACTOR SHALL VISIT THE SITE AND FIELD VERIFY THE EXTENT OF ELECTRICAL DEMOLITION WORK TO MEET THE INTENT OF THE BID DOCUMENTS AND INCLUDE ALL COSTS IN BID.
2. COORDINATE ELECTRICAL DEMOLITION WORK WITH ALL OTHER TRADES. REFER TO ELECTRICAL AND MECHANICAL SPECIFICATIONS FOR COMPLETE DEMOLITION SCOPE. REMOVE, RELOCATE OR MODIFY THE ELECTRICAL SYSTEMS REQUIRED TO ACCOMMODATE THE SCOPE OF THIS PROJECT.
3. REMOVE ALL DEVICES, RACEWAYS AND WIRING FROM WALLS TO BE REMOVED (INDICATED BY DASHED LINES). WHERE ACTIVE RACEWAYS OCCUR IN WALLS TO BE REMOVED, RE-ROUTE THE RACEWAY WITH ASSOCIATED WIRING TO KEEP THE CIRCUIT OPEN AND OPERATIONAL WHERE POSSIBLE. IF THE RACEWAY IS LOCATED OR INSTALLED, THEN PROVIDE NEW ELECTRICAL DEVICES IN EQUIPMENT TO MATCH THE ORIGINAL.
4. PRIOR TO REMOVAL OF ANY ELECTRICAL EQUIPMENT OR WIRING, FIELD VERIFY THAT THE EQUIPMENT OR WIRING IS INACTIVE OR NO LONGER IN USE.
5. LOCATE, PROTECT AND MAINTAIN ALL OTHER ELECTRICAL EQUIPMENT, FIXTURES, DEVICES, CONDUIT AND WIRING IN TACT AND OPERATIONAL. IF REMOVED OR DAMAGED AS PART OF THE DEMOLITION WORK, REPLACE LIKE FOR LIKE AND MAKE OPERATIONAL.
6. REMOVE ALL FIRE ALARM DEVICES WHERE EXISTING WALLS AND CEILINGS ARE BEING REMOVED, WITH ASSOCIATED CONDUIT AND WIRING. EXISTING FIRE ALARM DEVICES AND SYSTEM NOT INDICATED FOR REMOVAL SHALL REMAIN ACTIVE THROUGHOUT DEMOLITION WORK AND BE MAINTAINED IN TACT AND OPERATIONAL. TESTED AND OPERATIONAL. MAINTAIN ALL CLASS A FIRE ALARM INITIATING AND INDICATING LOOPS WHERE EXISTING DEVICES ARE REMOVED.
7. REMOVE ALL ABANDONED RACEWAY, CONDUIT, WIRING AND CABLEING WHETHER ABANDONED PREVIOUS TO THIS PROJECT OR AS A RESULT OF THIS PROJECT. NOT ALL ABANDONED ITEMS ARE SHOWN ON THESE PLANS AND FIELD VERIFICATION OF DEMOLITION SCOPE EXTENT IS REQUIRED.
8. CONTRACTOR TO TRACE AND LABEL ALL EXISTING LOADS TO REMAIN. THAT ARE CURRENTLY FED FROM PANELS THAT ARE BEING DEMOLISHED OR REMOVED IN THIS PROJECT. THESE LOADS TO BE RE-FED FROM NEW OR RE-INSTALLED EXISTING PANELS IN FOLLOWING PHASE(S).
9. REFER TO MECHANICAL DRAWINGS FOR MECHANICAL EQUIPMENT DEMOLITION/DISCONNECT. REMOVE AND/OR RELOCATED ALL ELECTRICAL ASSOCIATED WITH MECHANICAL EQUIPMENT TO BE REMOVED OR RELOCATED
10. CONTRACTOR TO COORDINATE WITH DTS FOR ALL TELECOMMUNICATIONS AND SECURITY/ACCESS CONTROL, CABLEING IN WALLS TO BE DEMOLISHED.


1 EXISTING ELECTRICAL EQUIPMENT TO REMAIN. PROTECT EXISTING ELECTRICAL EQUIPMENT AND FEEDERS IN CURRENT LOCATION.

1 EXISTING ELECTRICAL EQUIPMENT TO REMAIN. PROTECT EXISTING ELECTRICAL EQUIPMENT AND FEEDERS IN CURRENT LOCATION.



TAMP



ISSUE TYPE:	DATE:
BP-02 DD	October 17, 2022
	
3 ADD#03	11/01/22
PROJECT NUMBER:	220338
DRAWN BY:	JJN
CHECKED BY:	MCF

PHASE 2 LEVEL 2
OVERALL
ELECTRICAL
DEMOLITION PLAN

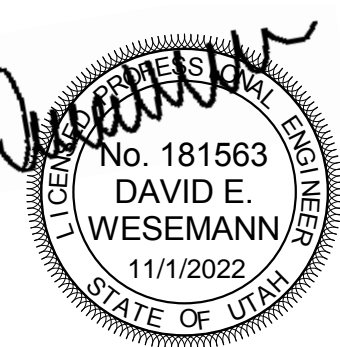
2.ED102

ARCHITECT CRA 175 S MAIN ST, STE 300 SALT LAKE CITY, UT 84111	C/O ZACH HESLOP zheslop@zha.com (801) 746-4974
STRUCTURAL ENGINEER REAVLEY ENGINEERS + ASSOC. 675 EAST 500 SOUTH, SUITE 400 SALT LAKE CITY, UT 84142	C/O JERROD JOHNSON johnson@reavley.com (801) 468-3933
MECHANICAL ENGINEER COLVIN ENGINEERING ASSOC. 505 E. SOUTH TEMPLE SALT LAKE CITY, UT 84143	C/O ALLEN EVANS aeavns@ce-ut.com (801) 322-2400
ELECTRICAL ENGINEER SPECTRUM ENGINEERING 324 STATE ST, STE 400 SALT LAKE CITY, UT 84102	C/O MICHAEL FACKRELL michael.fackrell@speeng.com (801) 328-5151
CM/AG GRANMOLL CONSTRUCTION 155 S 750 W NORTH SALT LAKE CITY, UT 84054	C/O JIM GRANMOLL jim.granmoll@granmoll.com (801) 256-2341

1. PRIOR TO SUBMITTING BID THE ELECTRICAL CONTRACTOR SHALL VISIT THE SITE AND FIELD VERIFY THE EXTENT OF ELECTRICAL DEMOLITION WORK TO MEET THE INTENT OF THE BID DOCUMENTS AND INCLUDE ALL COSTS IN BID.
2. COORDINATE ELECTRICAL DEMOLITION WORK WITH ALL OTHER TRADES. REFER TO ELECTRICAL AND MECHANICAL AND SPECIFICATIONS FOR COMPLETE DEMOLITION SCOPE. REMOVE, RELOCATE OR MODIFY THE ELECTRICAL SYSTEMS REQUIRED TO ACCOMMODATE THE SCOPE OF THIS PROJECT.
3. REMOVE ALL DEVICES, RACEWAYS AND WIRING FROM WALLS TO BE REMOVED (INDICATED BY DASHED LINES). WHERE ACTIVE RACEWAYS OCCUR IN WALLS TO BE REMOVED, RE-ROUTE THE RACEWAY WITH ASSOCIATED WIRING TO KEEP THE CIRCUIT OPEN AND OPERATIONAL WHERE POSSIBLE. IF THE RACEWAY IS LOCATED OR INSTALLED, THEN PROVIDE NEW ELECTRICAL DEVICES IN EQUIPMENT TO MATCH THE ORIGINAL.
4. PRIOR TO REMOVAL OF ANY ELECTRICAL EQUIPMENT OR WIRING, FIELD VERIFY THAT THE EQUIPMENT OR WIRING IS INACTIVE OR NO LONGER IN USE.
5. LOCATE, PROTECT AND MAINTAIN ALL OTHER ELECTRICAL EQUIPMENT, FIXTURES, DEVICES, CONDUIT AND WIRING IN TACT AND OPERATIONAL. IF REMOVED OR DAMAGED AS PART OF THE DEMOLITION WORK, REPLACE LIKE FOR LIKE AND MAKE OPERATIONAL.
6. REMOVE ALL FIRE ALARM DEVICES WHERE EXISTING WALLS AND CEILINGS ARE BEING REMOVED, WITH ASSOCIATED CONDUIT AND WIRING. EXISTING FIRE ALARM DEVICES AND SYSTEM NOT INDICATED FOR REMOVAL SHALL REMAIN ACTIVE THROUGHOUT DEMOLITION WORK AND BE MAINTAINED IN TACT AND OPERATIONAL. TESTED AND OPERATIONAL. MAINTAIN ALL CLASS A FIRE ALARM INITIATING AND INDICATING LOOPS WHERE EXISTING DEVICES ARE REMOVED.
7. REMOVE ALL ABANDONED RACEWAY, CONDUIT, WIRING AND CABLEING WHETHER ABANDONED PREVIOUS TO THIS PROJECT OR AS A RESULT OF THIS PROJECT. NOT ALL ABANDONED ITEMS ARE SHOWN ON THESE PLANS AND FIELD VERIFICATION OF DEMOLITION SCOPE EXTENT IS REQUIRED.
8. CONTRACTOR TO TRACE AND LABEL ALL EXISTING LOADS TO REMAIN. THAT ARE CURRENTLY FED FROM PANELS THAT ARE BEING DEMOLISHED OR REMOVED IN THIS PROJECT. THESE LOADS TO BE RE-FED FROM NEW OR RE-INSTALLED EXISTING PANELS IN FOLLOWING PHASE(S).
9. REFER TO MECHANICAL DRAWINGS FOR MECHANICAL EQUIPMENT DEMOLITION/DISCONNECT. REMOVE AND/OR RELOCATED ALL ELECTRICAL ASSOCIATED WITH MECHANICAL EQUIPMENT TO BE REMOVED OR RELOCATED
10. CONTRACTOR TO COORDINATE WITH DTS FOR ALL TELECOMMUNICATIONS AND SECURITY/ACCESS CONTROL, CABLEING IN WALLS TO BE DEMOLISHED.

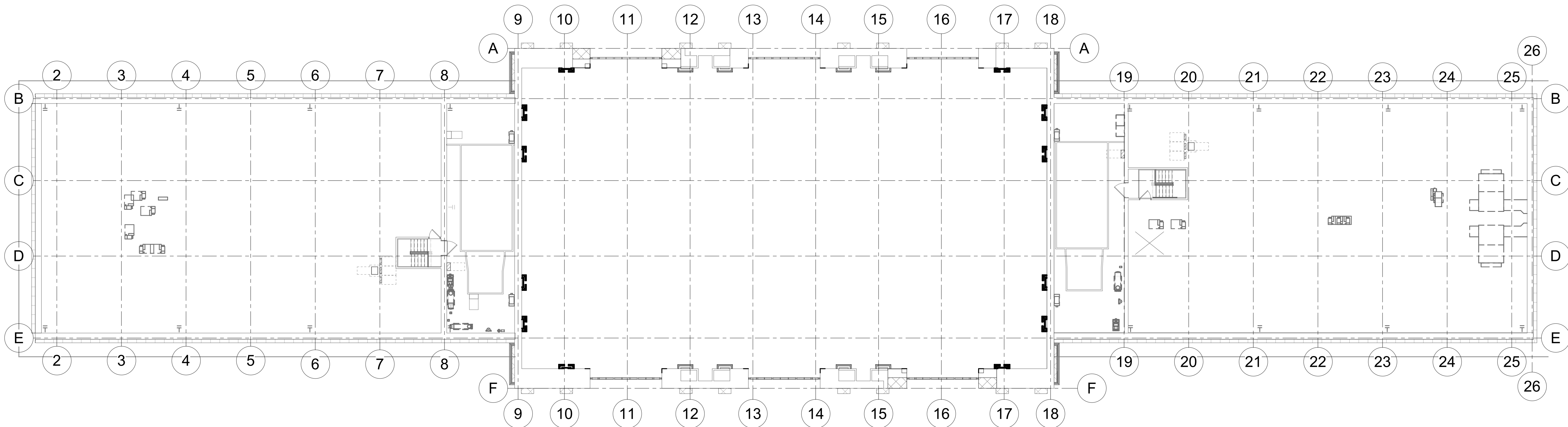
DFCM PROJECT #20229080

TAMF

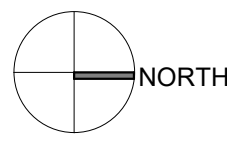


ISSUE TYPE:		DATE:
BP-02 DD		October 17, 2022
3	ADD#03	11/01/22
PROJECT NUMBER:		220338
DRAWN BY:		JJN
CHECKED BY:		MCF

2.ED103



1 PHASE 2 ATTIC OVERALL ELECTRICAL DEMOLITION PLAN
SCALE: 1/16" = 1'-0"



ARCHITECT CRSA 175 S. MAIN ST., STE. 300 SALT LAKE CITY, UT 84111	C/O ZACH HESLOP zheslop@csa-us.com (801) 476-4974
STRUCTURAL ENGINEER REAVELEY ENGINEERS + ASSOC. 675 EAST 5000 NORTH, SUITE 400 SALT LAKE CITY, UT 84142	C/O JEROD JOHNSON johnson@reaveley.com (801) 486-3993
Mechanical ENGINEER COLVIN ENGINEERING ASSOC. 505 E. SOUTH TEMPLE SALT LAKE CITY, UT 84102	C/O ALLEN EVANS aeavens@cea-us.com (801) 322-4040
ELECTRICAL ENGINEER MIDWESTERN ENGINEERING 324 STATE ST. STE. 400 SALT LAKE CITY, UT 84102	C/O MICHAEL FACKRELL michael.fackrell@pecoeng.com (801) 328-5151
CM/CG GRAMOLL CONSTRUCTION 1750 W. 1000 N. NORTH SALT LAKE, UT 84054	C/O JIM GRAMOLL jim.gramoll@gramoll.com (801) 295-2341

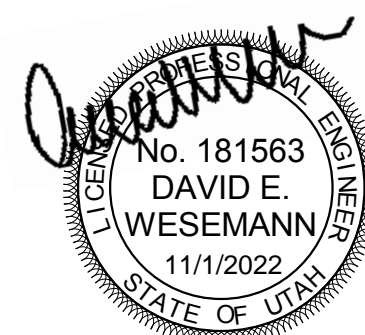
1. PRIOR TO SUBMITTING BID, THE ELECTRICAL CONTRACTOR SHALL VISIT THE SITE AND FIELD VERIFY THE EXTENT OF ELECTRICAL DEMOLITION WORK TO MEET THE INTENT OF THE BID DOCUMENTS AND INCLUDE ALL COSTS IN BID.
2. COORDINATE ELECTRICAL DEMOLITION WORK WITH ALL OTHER TRADES. REFER TO ARCHITECTURAL AND ALL OTHER SHEETS & SPECIFICATIONS FOR COMPLETE DEMOLITION REQUIREMENTS. REPAIR OR MODIFY THE ELECTRICAL SYSTEM AS REQUIRED TO ACCOMMODATE THE SCOPE OF THIS PROJECT.
3. REMOVE ALL DEVICES, RACEWAYS AND WIRING FROM WALLS TO BE REMOVED (INDICATED BY DASHED LINES). WHERE ACTIVE RACEWAYS OCCUR IN WALLS TO BE REMOVED, RE-ROUTE THE RACEWAY WITH ASSOCIATED WIRING TO KEEP THE CIRCUIT OPERATIONAL. WHERE WALLS ARE TO BE REPLACED, RELOCATED OR RE-INSTALLED, THEN PROVIDE NEW ELECTRICAL DEVICES IN EQUIPMENT TO MATCH THE ORIGINAL.
4. PRIOR TO REMOVE OF ANY ELECTRICAL EQUIPMENT OR WIRING, FIELD VERIFY THAT THE EQUIPMENT OR WIRING IS INACTIVE OR NO LONGER IN USE.
5. LOCATE, PROTECT AND MAINTAIN ALL OTHER ELECTRICAL EQUIPMENT, FIXTURES, DEVICES, CONDUIT AND WIRING IN TACT AND OPERATIONAL. IF REMOVED OR DAMAGED AS PART OF THE DEMOLITION WORK, REPLACE LIKE FOR LIKE AND MAKE OPERATIONAL.
6. REMOVE ALL ALARM DEVICES WHERE EXISTING WALLS AND CEILINGS ARE BEING REMOVED. RELOCATE EXISTING ALARMS TO NEW WALLS OR CEILINGS. IF EXISTING ALARMS AND SYSTEM NOT INDICATED FOR REMOVAL, SHALL REMAIN ACTIVE THROUGHOUT DEMOLITION AND CONSTRUCTION UNTIL THE NEW SYSTEM IS TESTED AND OPERATIONAL. MAINTAIN AND REPAIR ALL ALARM INITIATING AND INDICATING LOOPS WHERE EXISTING DEVICES ARE REMOVED.
7. REMOVE ALL ABANDONED RACEWAY, CONDUIT, WIRING AND CABLING WHERE ABANDONED PERMITTED TO THIS PROJECT OR AS A RESULT OF THIS PROJECT. NOT ALL ABANDONED ITEMS ARE SHOWN ON THESE PLANS AND FIELD VERIFICATION OF DEMOLITION SCOPE EXTENT IS REQUIRED.
8. CONTRACTOR TO TRACE AND LABEL ALL EXISTING LOADS TO REMAIN, THAT ARE CURRENTLY FED FROM PANELS THAT ARE BEING DEMOLISHED OR REMOVED IN THIS PROJECT. THIS LOADS TO BE RE-FED FROM NEW OR REINSTALLED EXISTING PANELS IN FOLLOWING PAGE(S)).
9. REFER TO MECHANICAL DRAWINGS FOR MECHANICAL EQUIPMENT DEMOLITION. DISCONNECT, REMOVE AND/OR RELOCATE ALL ELECTRICAL ASSOCIATED WITH MECHANICAL EQUIPMENT TO BE REMOVED OR RELOCATED.
10. CONTRACTOR TO COORDINATE WITH DTS FOR ALL TEL/COMMUNICATIONS AND SECURITY/VACCES/CONTROL CABLING IN WALLS TO BE DEMOLISHED.

SHEET KEYNOTES

300 SOUTH RIO GRANDE STREET
SALT LAKE CITY, UT 84101

DFCM PROJECT #20229080

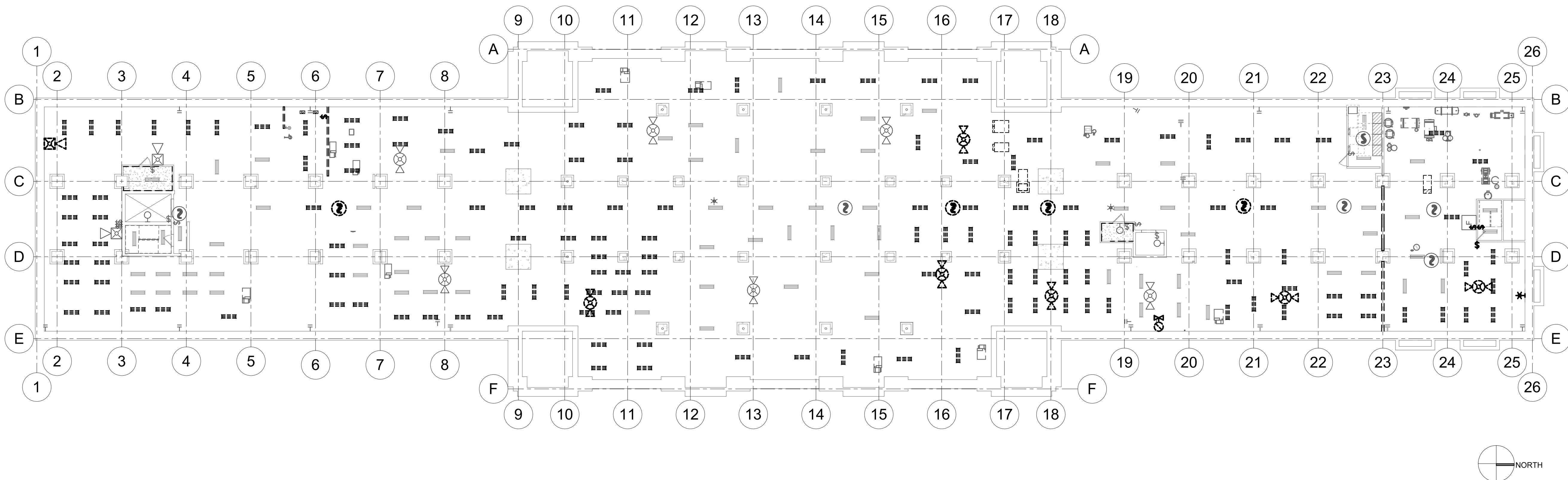
STAMI



ISSUE TYPE:	DATE:
BP-42 DD	October 17, 2022
3 ADD#03	11/01/22
PROJECT NUMBER:	220338
DRAWN BY:	JJN
CHECKED BY:	MCF

PHASE 2 BASEMENT
OVERALL RCP
ELECTRICAL
DEMOLITION PLAN

2.ED110



1 PHASE 2 BASEMENT CEILING OVERALL DEMOLITION PLAN
SCALE: 1/16" = 1'-0"

ARCHITECT CRSA 17 S. MAIN ST., STE. 300 SALT LAKE CITY, UT 84111	C/O ZACH HESLOP zheslo@crsa-us.com (801) 476-4974
STRUCTURAL ENGINEER REAVELY ENGINEERS + ASSOC. 675 EAST 500 SOUTH, SUITE 400 SALT LAKE CITY, UT 84102	C/O JEROD JOHNSON johnson@reaveley.com (801) 486-3083
METALLURGICAL ENGINEER COLVIN ENGINEERING ASSOC. 505 E. SOUTH TEMPLE SALT LAKE CITY, UT 84102	C/O ALLEN EVANS evans@cea-ut.com (801) 322-2400
ELECTRICAL ENGINEER SPECTRUM ENGINEERING 324 STATE ST., STE. 400 SALT LAKE CITY, UT 84102	C/O MICHAEL FACKRELL michael.fackrell@spectrum.com (801) 328-5151
CM/CG GRANOLL CONSTRUCTION 555 S. 750 W. NORTH SALT LAKE, UT 84054	C/O JIM GRANOLL jim.granoll@granoll.com (801) 295-2341

1. PRIOR TO SUBMITTING BID, THE ELECTRICAL CONTRACTOR SHALL VISIT THE SITE AND FIELD VERIFY THE EXTENT OF ELECTRICAL DEMOLITION WORK TO MEET THE INTENT OF THE BID DOCUMENTS AND INCLUDE ALL COSTS IN BID.
2. COORDINATE ELECTRICAL DEMOLITION WORK WITH ALL OTHER TRADES. REFER TO ARCHITECTURAL AND ALL OTHER SHEETS AND SPECIFICATIONS FOR COMPLETE DEMOLITION SCOPE. REMOVE, RELOCATE OR REPAIR THE ELECTRICAL SYSTEM AS REQUIRED TO ACCOMMODATE THE SCOPE OF THIS PROJECT.
3. REMOVE ALL DEVICES, RACEWAYS AND WIRING FROM WALLS TO BE REMOVED (INDICATED BY RED LINES). WHERE ACTIVE RACEWAYS OCCUR IN WALLS TO BE REMOVED, RE-ROUTE THE RACEWAY WITH ASSOCIATED WIRING TO KEEP THE CIRCUIT OPERATIONAL. WHERE WALLS ARE BEING REPLACED, RELOCATED OR RE-INSTALLED, THEN PROVIDE NEW ELECTRICAL DEVICES IN EQUIPMENT TO MATCH THE ORIGINAL.
4. PRIOR TO REMOVAL OF ANY ELECTRICAL EQUIPMENT OR WIRING, FIELD VERIFY THAT THE EQUIPMENT OR WIRING IS INACTIVE OR NO LONGER IN USE.
5. LOCATE, PROTECT AND MAINTAIN ALL OTHER ELECTRICAL EQUIPMENT, FIXTURES, DEVICES, CONDUIT AND WIRING IN TACT AND OPERATIONAL. IF REMOVED OR DAMAGED AS PART OF THE DEMOLITION WORK, REPLACE LIKE FOR LIKE AND MAKE OPERATIONAL.
6. REMOVE ALL FIRE ALARM DEVICES WHERE EXISTING WALLS AND CEILINGS ARE BEING REMOVED. REMOVE ALL EXISTING FIRE ALARM DEVICES, INCLUDING ALARM BELL AND SILENCE NOT INDICATED FOR REMOVAL SHALL REMAIN ACTIVE THROUGHOUT DEMOLITION AND CONSTRUCTION UNTIL THE NEW SYSTEM IS TESTED AND COMMISSIONED. MAINTAIN ALL EXISTING FIRE ALARM INITIATING AND INDICATING LOOPS WHERE EXISTING DEVICES ARE REMOVED.
7. REMOVE ALL ABANDONED RACEWAY, CONDUIT, WIRING AND CABLING WHETHER ABANDONED PREVIOUS TO THIS PROJECT OR AS A RESULT OF THIS PROJECT. NOT ALL ABANDONED ITEMS ARE SHOWN ON THESE PLANS AND FIELD VERIFICATION OF DEMOLITION SCOPE EXTENT IS REQUIRED.
8. CONTRACTOR TO TRACE AND LABEL ALL EXISTING LOADS TO REMAIN, THAT ARE CURRENTLY FEED FROM PANELS THAT ARE BEING DEMOLISHED OR REMOVED IN THIS PHASE. THESE LOADS TO BE RE-FEED FROM NEW OR RE-INSTALLED EXISTING PANELS IN FOLLOWING PHASE(S).
9. REFER TO MECHANICAL DRAWINGS FOR MECHANICAL EQUIPMENT DEMOLITION. DISCONNECT, REMOVE AND/OR RELOCATE ALL ELECTRICAL ASSOCIATED WITH MECHANICAL EQUIPMENT TO BE REMOVED OR RELOCATED.
10. CONTRACTOR TO COORDINATE WITH DTS FOR ALL TELECOMMUNICATIONS AND SECURITY ACCESS CONTROL CABLING IN WALLS TO BE DEMOLISHED.


- 1 IN AREA WHERE SILING IS TO BE DEMOLISHED, CONTRACTOR TO PRESERVE, DISCONNECT, AND STORE EXISTING FIRE ALARM DEVICES, SECURITY DEVICES, TELECOM DEVICES, EXIT SIGNS, LIGHTING EQUIPMENT, AND LIGHT FIXTURES ON CEILING TO BE REINSTALLED IN A LATER PHASE.
- 2 CEILING AREA DEMOLISHED IN PREVIOUS PHASE. REFER TO ARCHITECTURAL SHEETS 2 AD111 & 2 AD112.
- 3 HISTORIC LIGHT FIXTURES TO BE REMOVED AND STORED TO BE REINSTALLED AT A LATER PHASE.

300 SOUTH RIO GRANDE STREET
SALT LAKE CITY, UT 84101

DFCM PROJECT #20229080

STAMP

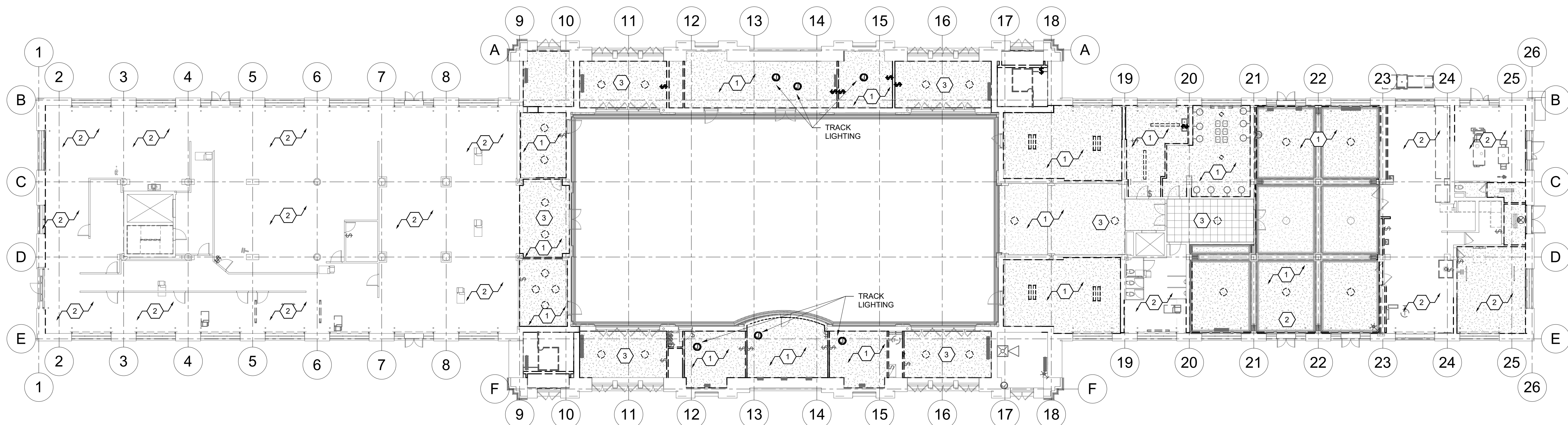


ISSUE TYPE:		DATE:
BP-02 DD		October 17, 2022
		
3	ADD#03	11/01/22

PROJECT NUMBER:	220338
DRAWN BY:	JJN
CHECKED BY:	MCF

PHASE 2 LEVEL 1
OVERALL RCP
ELECTRICAL
DEMOLITION PLAN

2.ED111

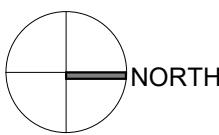


SCALE: 1/16" = 1'-0"

ARCHITECT CRSA 175 S. MAIN ST., STE. 300 SALT LAKE CITY, UT 84111	C/O ZACH HESLOP zheslop@crsa-us.com (801) 476-8774
STRUCTURAL ENGINEER REAVLEY ENGINEERS + ASSOC. 675 EAST 5000 SUITE 400 SALT LAKE CITY, UT 84102	C/O JEROD JOHNSON johnson@reavley.com (801) 486-3553
MECHANICAL ENGINEER COLVIN ENGINEERING ASSOC. 505 E. SOUTH TEMPLE SALT LAKE CITY, UT 84102	C/O ALLEN EVANS aevans@ceea-tv.com (801) 322-2240
ELECTRICAL ENGINEER SPECTRUM ENGINEERING 324 STATE ST., STE. 400 SALT LAKE CITY, UT 84102	C/O MICHAEL FAXCELL michael FAXCELL@spectrum.com (801) 328-5151
CM/CG GRAMOLL CONSTRUCTION 1750 W NORTH SALT LAKE, UT 84054	C/O JIM GRAMOLL jim.gramoll@gramoll.com (801) 295-2341

1. PRIOR TO SUBMITTING BID, THE ELECTRICAL CONTRACTOR SHALL VISIT THE SITE AND FIELD VERIFY THE EXTENT OF ELECTRICAL DEMOLITION WORK TO MEET THE INTENT OF THE BID DOCUMENTS AND INCLUDE ALL COSTS IN BID.
2. COORDINATE ELECTRICAL DEMOLITION WORK WITH ALL OTHER TRADES. REFER TO ARCHITECTURE AND MECHANICAL SHEETS AND SPECIFICATIONS FOR COMPLETE DEMOLITION SCOPE. REMOVE, RELOCATE OR MODIFY THE ELECTRICAL SYSTEM AS REQUIRED TO ACCOMMODATE THE SCOPE OF THIS PROJECT.
3. REMOVE ALL DEVICES, RACEWAYS AND WIRING FROM WALLS TO BE REMOVED (INDICATED BY DASHED LINES). WHERE ACTIVE RACEWAYS OCCUR IN WALLS TO BE REMOVED, RE-ROUTE THE RACEWAY WITH ASSOCIATED WIRING TO KEEP THE CIRCUIT OR TERMINAL, WHERE APPROPRIATE, AND BE REPLACED, RELOCATED OR RE-INSTALLED. THEN PROVIDE NEW ELECTRICAL DEVICES IN EQUIPMENT TO MATCH THE ORIGINAL.
4. PRIOR TO REMOVAL OF ANY ELECTRICAL EQUIPMENT OR WIRING, FIELD VERIFY THAT THE EQUIPMENT OR WIRING IS INACTIVE OR NO LONGER IN USE.
5. LOCATE, CONTACT AND MAINTAIN ALL OTHER ELECTRICAL EQUIPMENT, FIXTURES, DEVICES, CONTROLS AND WIRING TO REMAIN OR TO BE REMOVED OR DAMAGED AS PART OF THE DEMOLITION WORK. REPLACE LIKE AND MAKE OPERATIONAL.
6. REMOVE ALL FIRE ALARM DEVICES WHERE EXISTING WALLS AND CEILINGS ARE BEING REMOVED, WITH ASSOCIATED CONDUIT AND WIRING. EXISTING FIRE ALARM DEVICES AND SYSTEM NOT INSTALLED FOR REMOVAL SHALL REMAIN ACTIVE THROUGHOUT DEMOLITION AND CONSTRUCTION UNTIL THE NEW SYSTEM IS TESTED AND OPERATIONAL. MAINTAIN AND ALARM INITIATING AND OPERATING LOOPS WHERE EXISTING DEVICES ARE REMOVED.
7. REMOVE ALL ABANDONED RACEWAY, CONDUIT, WIRING AND CABLING WHERE ABANDONED PREVIOUS TO THIS PROJECT OR AS A RESULT OF THIS PROJECT. NOT ALL ABANDONED ITEMS ARE SHOWN ON THESE PLANS AND FIELD VERIFICATION OF DEMOLITION SCOPE EXTENT IS REQUIRED.
8. CONTRACTOR TO TRACE AND LABEL ALL EXISTING LOOPS TO REMAIN, THAT ARE CURRENTLY FED FROM PANELS THAT ARE BEING DEMOLISHED OR REMOVED IN THIS PROJECT. THIS MADE AND LABEL BE RE-FED FROM NEW OR REINSTALLED EXISTING PANELS IN FOLLOWING PHASE(S).
9. REFER TO MECHANICAL DRAWINGS FOR MECHANICAL EQUIPMENT DEMOLITION. CONTACT MECHANICAL AND/OR MECHANICAL CONTRACTOR FOR INFORMATION ASSOCIATED WITH MECHANICAL EQUIPMENT TO BE REMOVED OR RELOCATED.
10. CONTRACTOR TO COORDINATE WITH DTS FOR ALL TELECOMMUNICATIONS AND SECURITY/VACCESST CONTROL CABLING IN WALLS TO BE DEMOLISHED.

- 1 IN AREA WHERE CEILING IS TO BE DEMOLISHED, CONTRACTOR TO PRESERVE, DISCONNECT, AND STORE EXISTING FIRE ALARM DEVICES, SECURITY DEVICES, TELECOM DEVICES, EXIT SIGNS, LIGHTING EQUIPMENT, AND LIGHT FIXTURES ON CEILING TO BE REINSTALLED IN A LATER PHASE.
- 2 CEILING AREA DEMOLISHED IN PREVIOUS PHASE. REFER TO ARCHITECTURAL SHEETS 2 AD1111 & 2 AD1112.

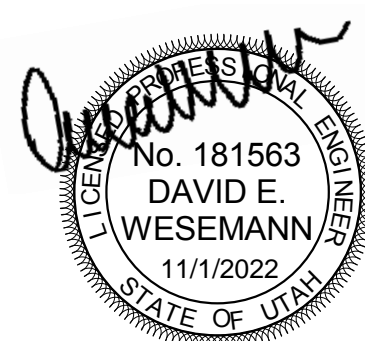


SCALE: 1/16" = 1'-0"

300 SOUTH RIO GRANDE STREET
SALT LAKE CITY, UT 84101

DFCM PROJECT #20229080

STAMI



ISSUE TYPE:	DATE:
BP-02 DD	October 17, 2022
3 ADD#03	11/01/22
PROJECT NUMBER:	220338
DRAWN BY:	JJN
CHECKED BY:	MCF

PHASE 2 LEVEL 2
OVERALL RCP
ELECTRICAL
DEMOLITION PLAN

2.ED112